

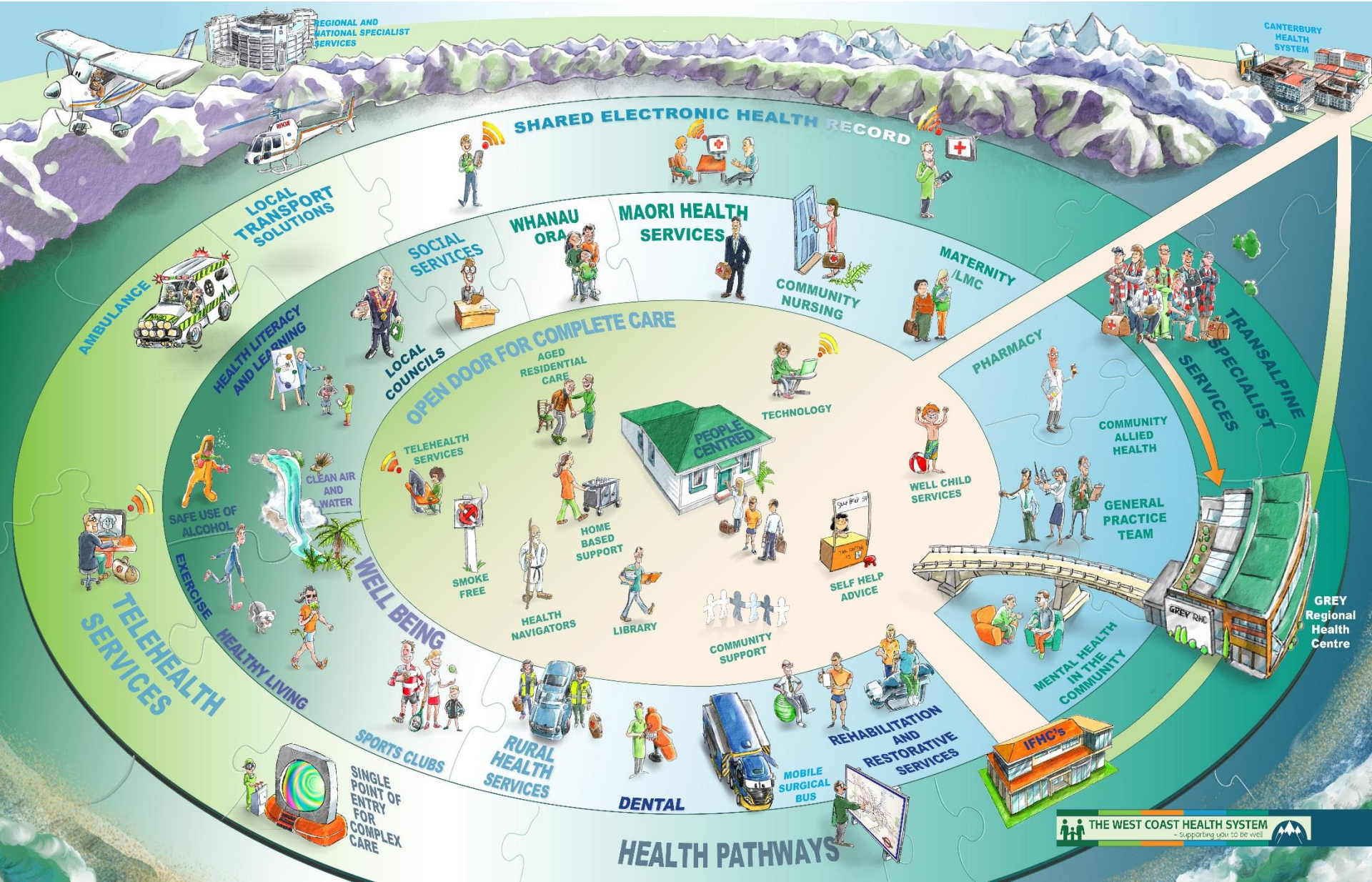


West Coast District Health Board New Grey Hospital and Integrated Family Health Centre: Public Briefing Meeting

11 December 2014



After community and clinician consultation, we have a clear vision and plan for Coast health services...



... and we're making progress in a number of key areas to bring the vision fully to life.



Healthy
Environment
& Lifestyles



Health Care
Home



Single Point
of Entry for
Complex Care



Māori Health



Transalpine
Health Service



Integrated
Information
Systems



Transport



Health
Professionals



Settings

Health *facilities* are a key part of the plan for Coast health services. Current facilities are challenged...

Our **current Grey hospital facilities**:

- are between 40 and 50 years old...
- include a number of buildings which - after detailed engineering reviews in 2012 - were found to be earthquake prone
- include some structures which have had to be closed, demolished or temporarily reconfigured
- don't support integrated health services; buildings and services are spread out and disconnected.

... and so government has committed to a new hospital and IFHC in Greymouth

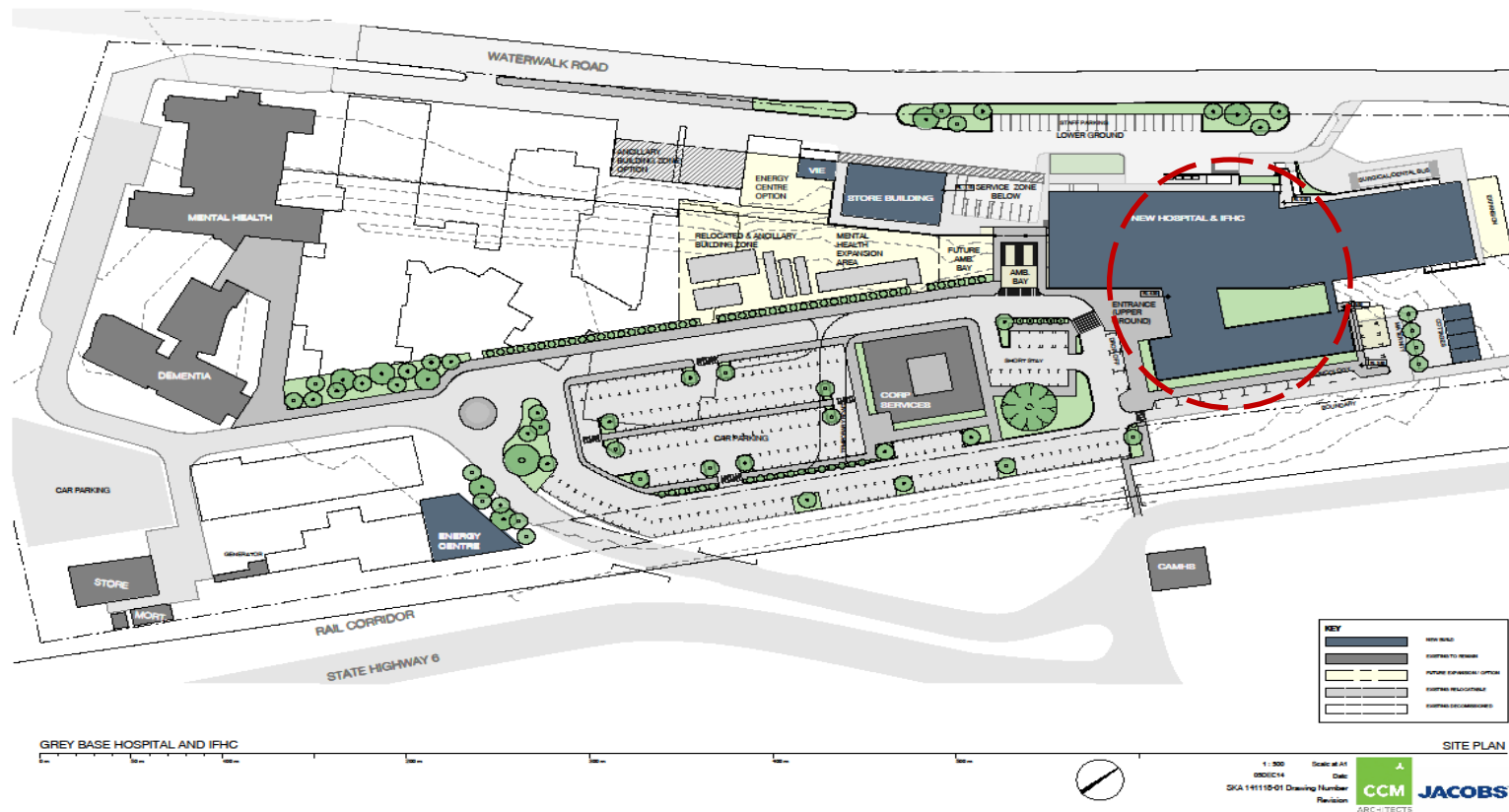
The **new Grey hospital and IFHC facility is proposed to include:**

- a hospital with approximately 60 inpatient beds and 3 operating theatres to support the current range of services, including planned and emergency medical, surgical and maternity services
- an outpatients facility
- an Integrated Family Health Centre to enable the full range of primary care and community care services from the one site.

In addition, the plan approved by government includes a new inpatient mental health unit, to be built within the next five years.

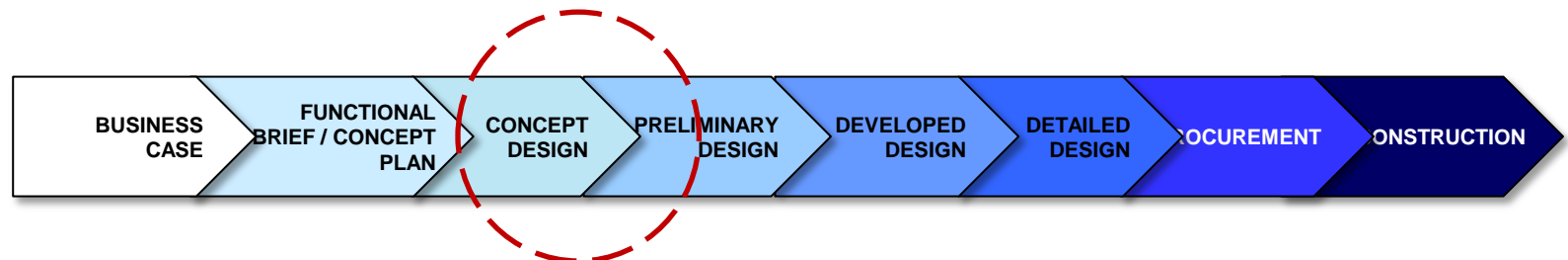
It's proposed to be built on the northwestern aspect of the DHB's current site

[where the nurses home used to be]



The design process has a number of steps, and more than 50 clinicians are leading it.

- The first step was for clinicians to work with designers to come up with an understanding of which services needed to be located together
- The teams are currently turning this information into a concept design
- There are still three further stages in the design process before the design is finalised and construction commences
- We've now got some very early artist's impressions of what the facility might look like, but these may well change...





Early artist impressions



Early artist impressions



Occupancy Type

- Clinical-Treatment
- Clinical-Support
- Non-Clinical-Support
- Public
- Treat-Public
- Treat-Clinical
- Rest
- Patient Lift
- Serv. Lift
- Pub. Lift

We're working to a timeline for the facility to be opened in early 2017

- Continue preliminary design: through February 2015
- Builder to be appointed: Mid 2015
- Construction to commence: Second half of 2015
- Commissioning of new hospital and IFHC: Early 2017
- Hospital and IFHC official opening: Early 2017

There'll be a number of opportunities to contribute to the planning...

- Come to public meetings; we'll be calling more through 2015
- Visit our *Design Lab* when it's set up next year
- Regular updates on our website www.westcoastdhb.health.nz, in local newspapers and in our CE Update (sign up at the back of the room if you would like to receive this electronic newsletter)
- Email your thoughts, suggestions and feedback to facilities@westcoastdhb.health.nz



West Coast District Health Board New Grey Hospital and Integrated Family Health Centre: Public Briefing Meeting

11 December 2014

