

National Health Targets Performance Summary

Quarter 4 2016/17 (April – June 2017)

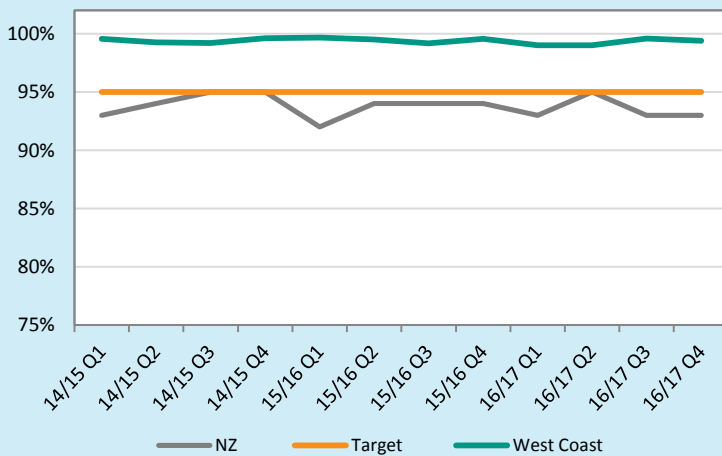
Target Overview

Target	Q1 16/17	Q2 16/17	Q3 16/17	Q4 16/17	Target	Status	Pg
Shorter Stays in ED Patients admitted, discharged or transferred from an ED within 6 hours	99%	99%	100%	99%	95%	✓	2
Improved Access to Elective Surgery West Coast's volume of elective surgery ¹	480 YTD	991 YTD	1,441 YTD	1,979	1,906	✓	2
Faster Cancer Treatment Patients receive their first cancer treatment (or other management) within 62 days of being referred with a high suspicion of cancer	63%	76%	83%	56%	85%	✗	3
Increased Immunisation Eight-month-olds fully immunised	76%	80%	91%	80%	95%	✗	3
Better Help for Smokers to Quit Smokers offered help to quit smoking by a primary care health care practitioner in the last 15 months	84%	91%	92%	91%	90%	✓	4
Raising Healthy Kids Percent of obese children identified at B4SC, a referral offered and acknowledged for clinical assessment and healthy lifestyle interventions	40%	0%	17%	81%	95%	✗	4

Shorter Stays in Emergency Departments

Target: 95% of patients are admitted, discharged or transferred from ED within 6 hours

Figure 1: Percentage of patients who were admitted, discharged or transferred from ED within six hours



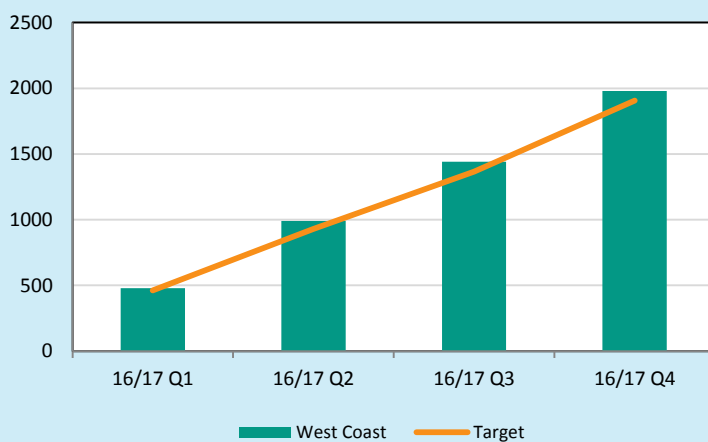
The West Coast continues to achieve the ED health target, with 99% of patients admitted, discharged or transferred from ED within 6 hours during quarter four.

The DHB-owned primary care practice has extended its hours to 8am- 6pm and are now providing an unplanned care facility for those with urgent care needs. This has led to a reduction in triage five presentations at Grey Hospital ED.

Improved Access to Elective Surgery

Target: 1,906 elective surgeries in 2016/17

Figure 2: Elective surgical discharges delivered by the West Coast DHB ¹



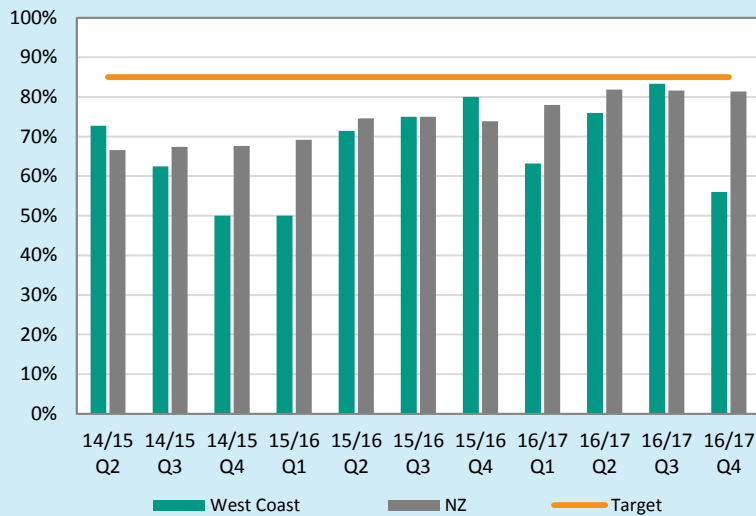
This quarter, the West Coast DHB provided 1,979 elective surgical discharges, delivering 103.8% of planned discharges and meeting the year-end target.

¹ Excludes cardiology and dental procedures. Progress is graphed cumulatively.

Faster Cancer Treatment

Target: Patients receive their first cancer treatment (or other management) within 62 days of being referred with a high suspicion of cancer

Figure 3: Percentage of West Coasters with a high suspicion of cancer receiving their first treatment or other management within 62 days



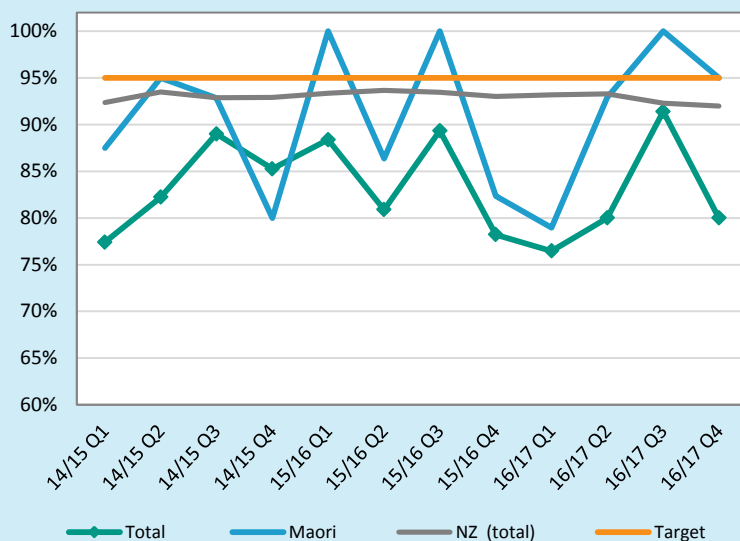
Performance decreased this quarter to 56% of patients receiving their first cancer treatment (or other management) within 62 days of being referred with a high suspicion of cancer.

Small numbers are challenging with this result reflecting only four non-compliant patients. A breach analysis is underway and every non-compliant case individually followed up. Most non-compliant cases are physically, psychologically, and diagnostically challenging.

Increased Immunisation

Target: 95% of eight-month-olds are fully immunised

Figure 4: Percentage of West Coast eight-month-olds who were fully immunised



During quarter four 80% of all eight-month-olds were fully immunised.

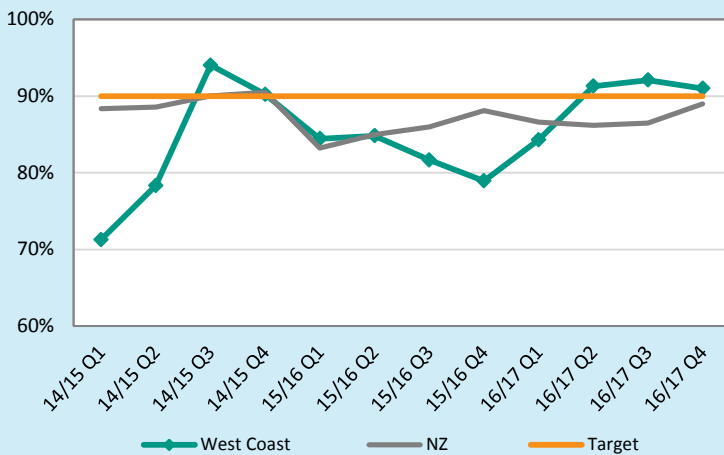
Opt-off and declines doubled this quarter to a combined 15% (12 children). This continues to make meeting the target impossible.

We are pleased that 94% of our consenting population were immunised this quarter, with just four children missed.

Better Help for Smokers to Quit: *Primary*

Target: 90% of smokers in the community receive advice to quit

Figure 6: Percentage of PHO enrolled population who smoke that have been offered help to quit smoking by a health care practitioner in the last 15 months



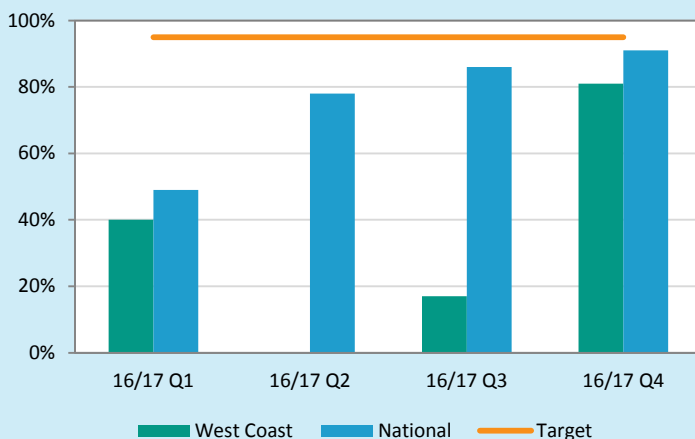
West Coast health practitioners have reported giving 4,743 smokers cessation advice in the 15 months ending June 2017. This represents 91% of smokers against the 90% target.

The DHB is pleased to have exceeded the target this quarter not only for total population but also for Māori and High Needs. A number of practices have shown significant improvements and have been supported by the Smokefree Services Coordinator and PHO Clinical Manager.

Raising Healthy Kids

Target: 95% of obese children identified at B4SC will be offered a referral for clinical assessment and healthy lifestyle intervention

Figure 7: Percentage of obese children identified at B4SC offered a referral for clinical assessment and healthy lifestyle intervention.²



This quarter, sixteen children were identified as obese with three referred, two acknowledged, and eleven declined. This represents 81% coverage and a huge 64% increase on the previous quarter.

We are pleased to have had a significant increase in our identification and referral of obese children but recognise that the large number of declines needs to be addressed. This is something the DHB is working on in conjunction with the PHO who have committed to supporting this target with their Dietician.

² Results are based on all **acknowledged** referrals for obese children

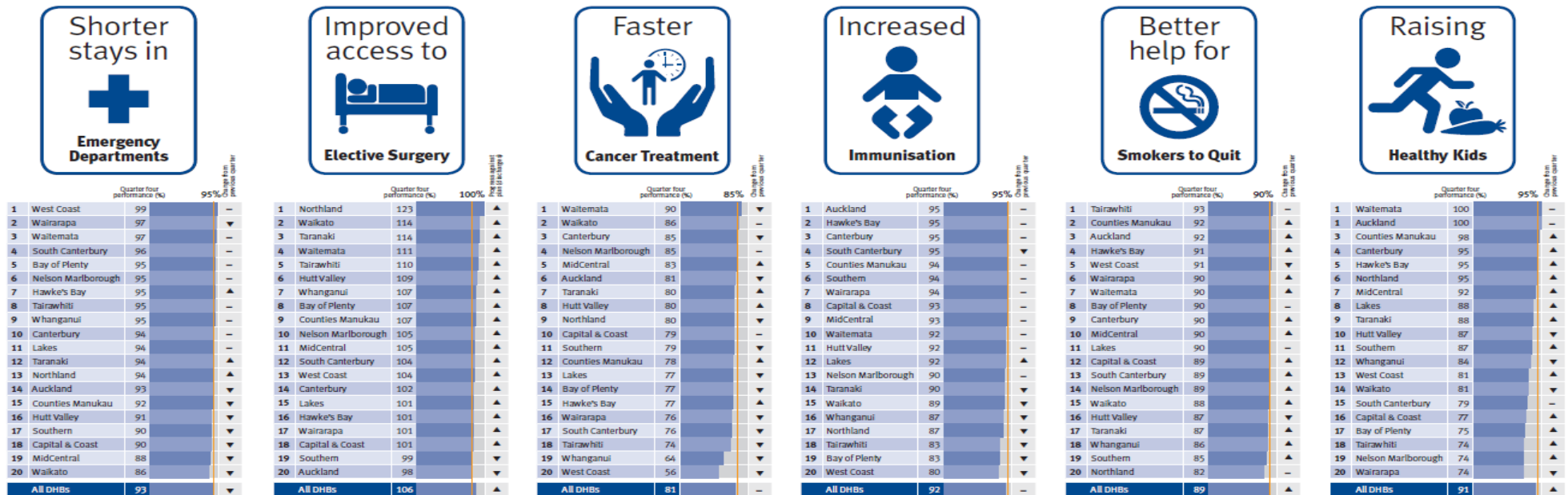
National Health Targets Performance Table – Quarter 4 2016/17 (April – June 2017)

How is My DHB performing?



2016/17 QUARTER FOUR (APRIL–JUNE 2017) RESULTS

www.health.govt.nz/healthtargets



Shorter stays in Emergency Departments

The target is 95 percent of patients will be admitted, discharged, or transferred from an Emergency Department (ED) within six hours. The target is a measure of the efficiency of flow of acute (urgent) patients through public hospitals, and home again.

Improved access to elective surgery

The target is an increase in the volume of elective surgery by an average of 4,000 discharges per year. DHBs planned to deliver 192,237 discharges for the year to date, and have delivered 117,978 more.

Faster cancer treatment

The target is 85 percent of patients receive their first cancer treatment (or other management) within 62 days of being referred with a high suspicion of cancer and a need to be seen within two weeks. Results cover those patients who received their first cancer treatment between 1 January to 30 June 2017.

Note: From 1 July 2017 the faster cancer treatment target goal will increase to 90 percent. Quarter one 2017/18 results will be against the 90 percent target.

Increased immunisation

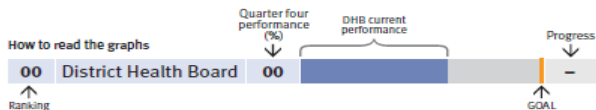
The national immunisation target is 95 percent of eight-month-olds have their primary course of immunisation at six weeks, three months and five months on time. This quarterly progress result includes children who turned eight-months between 1 April and 30 June 2017 and who were fully immunised at that stage.

Better help for smokers to quit

The target is 90 percent of PHO enrolled patients who smoke have been offered help to quit smoking by a health care practitioner in the last 15 months.

Raising healthy kids

The target is that by December 2017, 95 percent of obese children identified in the Before School Check programme will be offered a referral to a health professional for clinical assessment and family based nutrition, activity and lifestyle interventions. Data is based on all acknowledged referrals for obese children up to the end of the quarter from Before School Checks occurring in the six months between 1 December 2016 to 30 May 2017.



Health target results are sourced from individual DHB reports, national collections systems and information provided by primary care organisations.

This information should be read in conjunction with the details on the website www.health.govt.nz/healthtargets

New Zealand Government