

TATAU POUNAMU

Ki Te Tai o Poutini



MANAWHENUA ADVISORY GROUP

12 March 2015

@ 3.00pm WCDHB – Kahurangi Room, Mental Health

Agenda and Meeting Papers

**ALL INFORMATION CONTAINED IN THESE
COMMITTEE PAPERS IS SUBJECT TO CHANGE**

TATAU POUNAMU ADVISORY GROUP MEETING

Kahurangi Room, Mental Health Services

Thursday 12 March 2015 @ 3.00 pm

KARAKIA

ADMINISTRATION

Apologies

1. Interest Register

Update Interest Register and Declaration of Interest on items to be covered during the meeting.

2. Confirmation of the Minutes of the Previous Meeting

29 January 2015

3. Carried Forward/Action List Items

4. Discussion Items

▪ Rangatahi

- Philip Wheble, Team Leader Planning & Funding – Alliance and Grey/Westland Update
(Acting for Mark Newsome)

4.00pm

- Karyn Bousfield, Director of Nursing for Mark Newsome

4.00pm

REPORTS

5. Chairs Update – Verbal Report

Chair

6. GM Maori Health – Report

Gary Coghlan, Maori Health

7. Maori Health Plan 2015/16 Update

Kylie Parkin, Maori Health

Draft Workstream Plans Update

Kylie Parkin, Maori Health

Quarter 2 Report Update

Kylie Parkin, Maori Health

8. Alliance Update

Philip Wheble, Planning & Funding

INFORMATION ITEMS

- Tatau Pounamu Meeting Schedule

ESTIMATED FINISH TIME 5.00pm

TATAU POUNAMU ADVISORY GROUP MEMBERS INTEREST REGISTER

Member	Disclosure of Interest
<p>Lisa Tumahai (Chair) Te Runanga O Ngati Waewae</p>	<p>Directorships</p> <ul style="list-style-type: none"> Chair - Arahura Holdings Ltd 2005 – currently Chair -Te Waipounamu Maori Heritage Centre 2006 – currently <p>Committees</p> <ul style="list-style-type: none"> Te Waipounamu Maori Cancer Network Committee 2012 - currently Te Runanga O Ngati Waewae Incorporated Society 2001 – currently Chair – Te Here (subcommittee Te Runanga o Ngai Tahu 2011 - currently) Member Maori Advisory Group to Vice Chancellor Canterbury University 2012 - currently <p>Trustee</p> <ul style="list-style-type: none"> West Coast PHO 2013 – currently Poutini Waiora – April 2013 - currently Te Runanga O Ngai Tahu - Deputy Kaiwhakahaere (2011 - currently) Te Poari o Kati Waewae Charitable Trust – (2000 – currently) Husband Francois Tumahai.
<p>Francois Tumahai Te Runanga O Ngati Waewae</p>	<ul style="list-style-type: none"> Chair, Te Runanga o Ngati Waewae Director/Manager Poutini Environmental Director, Arahura Holdings Limited Project Manager, Arahura Marae Project Manager, Ngati Waewae Commercial Area Development Member, Westport North School Advisory Group Member, Hokitika Primary School Advisory Group Member, Buller District Council 2050 Planning Advisory Group Member, Greymouth Community Link Advisory Group Member, West Coast Regional Council Resource Management Committee Member, Poutini Waiora Board Member, Grey District Council Creative NZ Allocation Committee

Member	Disclosure of Interest
	<ul style="list-style-type: none"> ▪ Member, Buller District Council Creative NZ Allocation Committee ▪ Trustee, Westland Wilderness ▪ Trustee, Te Poari o Kati Waewae Charitable ▪ Trustee, Westland Petrel ▪ Advisor, Te Waipounamu Maori Cultural Heritage Centre ▪ Trustee, West Coast Primary Health Organisation Board ▪ Wife is Lisa Tumahai, Chair
<p>Elinor Stratford</p> <p>West Coast District Health Board representative on Tatau Pounamu</p>	<ul style="list-style-type: none"> ▪ Member Clinical Governance Committee, West Coast Primary Health Organisation ▪ Chair Victim Support Grey & Westland ▪ Committee Member, Active West Coast ▪ Chairperson, West Coast Sub-branch-Canterbury Neonatal Trust ▪ Committee Member, Abbeyfield Greymouth Incorporated ▪ Trustee, Canterbury Neonatal Trust ▪ Board Member of the West Coast District Health Board ▪ Advisor to the Committee MS Parkinsons ▪ Member of the Southern Regional Liasion Group for Arthritis New Zealand
<p>Gina Robertson</p> <p>Kawatiri</p>	<ul style="list-style-type: none"> ▪ Maori Community Representative – Incident Reporting Group, Buller Hospital ▪ Buller Maori Representative on the Buller Integrated Family Healthcare Workstream ▪ North School Iwi Representative, Board of Trustee
<p>Wayne Secker</p> <p>Mawhera</p>	<ul style="list-style-type: none"> ▪ Trustee, WL & HM Secker Family Trust ▪ Member, Greymouth Waitangi Day Picnic Committee
<p>Paul Madgwick</p> <p>Te Runanga o Makaawhio</p>	<ul style="list-style-type: none"> ▪ Chairman, Te Runanga o Makaawhio ▪ Editor - Greymouth Star, Hokitika Guardian, West Coast Messenger. ▪ Board member, Poutini Waiora
<p>Susan Wallace</p> <p>Te Runanga o Makaawhio</p>	<ul style="list-style-type: none"> • Tumuaki, Te Runanga o Makaawhio • Member, of the West Coast District Health Board • Member, Te Runanga o Makaawhio • Member, Te Runanga o Ngati Wae Wae • Director, Kati Mahaki ki Makaawhio Ltd

Member	Disclosure of Interest
	<ul style="list-style-type: none"> • Mother is an employee of West Coast District Health Board • Father member of Hospital Advisory Committee • Father employee of West Coast District Health Board • Director, Kōhatu Makaawhio Ltd • Appointed member of Canterbury District Health Board • Chair, Poutini Waiora ▪ Area Representative-Te Waipounamu Maori Womens' Welfare League

MINUTES OF THE TATAU POUNAMU MANAWHENUA ADVISORY MEETING



MINUTES OF THE TATAU POUNAMU MANAWHENUA ADVISORY MEETING Kahurangi Room Mental Health Services @ West Coast DHB, Greymouth, on Thursday 29 January 2015 @ 3.00pm

- PRESENT:** Lisa Tumahai, Te Rūnanga O Ngāti Waewae (Chair)
Elinor Stratford, West Coast DHB Representative
Francois Tumahai, Te Rūnanga O Ngāti Waewae
Susan Wallace, Te Runanga O Makaawhio
Gina Robertson, Maori Community, Buller
Wayne Secker, Maori Community, Mawhera
- IN ATTENDANCE:** Gary Coghlan, General Manager Māori Health, West Coast DHB
Kylie Parkin, Portfolio Manager Maori Health
Mark Newsome, General Manager Grey/Westland
- APOLOGIES:** Paul Madgwick, Te Runanga O Makaawhio
Michael Frampton, Programme Director
- PRESENTERS:** Adam Flowers, CMC Architects (*Hospital Rebuild Team – External Consultants*)
Jim Coard, Ministry of Health
Alistair Burke – Johnstaff (Project Manager)
- MINUTE TAKER:** Megan Tahapeehi, Maori Health

WELCOME / KARAKIA

AGENDA / APOLOGIES

1. DISCLOSURES OF INTEREST

Remove Elinor Stratford – Trustee Queensland & West Coast Disabilities
Remove Gina Robertson - Whanau Group Chair Resigned

2. MINUTES OF THE LAST MEETING

Moved: Susan Wallace **Second:** Elinor Stratford

Carried

3. Carried forward/Action List Items

No. 4 – Tatau Pounamu Terms of Reference & MOU

Lisa had to postpone the meeting awaiting another time. Kay Jenkins to action.

ACTION: Megan to make contact with Kay.

No. 4 – Maori Representative Appointment Requests

Gary Coghlan discussed the list of current representatives.

The chair talked about the importance of the Maori appointments policy and that it is to be used for any Maori representation requests onto various committees/workstreams via Tatau Pounamu. When we are dealing with workstreams or health services the ability to have a one stop list and database to build a pool of people to build the capacity is important. A Member also commented to say that into the future youth representation onto this database would be positive.

The request for Maori representatives onto committees/workstreams needsto be communicated out further partcularly within the DHB

ACTION: Distribute information within the DHB about the Maori Appointments Policy.

DNA Update

Ask Julie Lucas to attend April meeting.

Health Services for Westland District

The Chair advised that this will be a continuing item on the interest register.

Mark reiterated the DHB position is still the same and hasn't changed.

Philip Wheble commented that he understands there is an extra doctor for South Westalnd.

Rangatahi

How do we engage better. To be carried over to the end of the agenda

A G E N D A

Discussion Items

Mark Newsome – GM Grey/Westland Health Services Update

Facilities Update

- Now going through development phase. Design team back into gear late April. Progress is positive.
- RFP Process in place for the heavy engineering for facility – close to a conclusion.
- Buller – Work progressing well.
- Moana – Work beginning with a clinic in Moana There has been a number of meetings regarding this. Council going to give the land. Working with council and community.
- Haast – The clinic facilities here are long passed there used by date and needs some priority. Grey and Buller need to be on stream with this. This part is odd to read maybe leave it is hard to follow. Needs to be included I will ask Mark to reclarify.

- Reefton – Last stakeholder engagement meeting was held on 20 January. Positive feedback and actions from this meeting. Challenges are not around the model of care it is how a facility will enable the model of care to work efficiently.
- Primary Care – Waiting times remain stable.
- Hospital Services – Just recently been through holiday period and some elective services were stopped due to volume. DNA rates were high over this period and allowed for staff to take leave. Didn't need to reopen because of volumes.
- Hannan Ward - Remains closed currently. Assessing this on a daily basis. Staff have been integrated into other wards.

Whanau Ora Hui Buller – Gary Coghlan

December 8 hui in Buller. Worked closely with Poutini Waiora staff. Had approximately 40 people in attendance great turnout.

Susan Turner – CEO Putahitanga, sent out her feedback to people in attendance who left their details. Peter Salmon will travel to the Buller in February to work with the Maori community.

Business plans etc will be written up and in time a community profile will be developed.

GM Maori Health Report Update - Verbal

Kia ora Hauora is a well run and respected programme. Registrations on the Coast are a very high percentage, in fact the highest percentage enrolled was on Tai O Poutini in comparison to the rest of the South Island.

INFORMATION ITEMS

Alliance Update Report

Phillip Wheble was in attendance to discuss the progress of the Alliance workstreams. The Grey/Westland workstream had completed a Longterm Conditions Profiling and Stratification project that provided a methodology of identifying at risk population of a practice. Tatau Pounamu would appreciate if they could be presented the findings of this. It was advised that the report could be provided to Tatau Pounamu and that the workstream was reviewing next steps.

Adam Flowers – WCDHB Design Team

Adam Flowers, Jim Coard, Ministry of Health and Alistair Burke who are contractors within the Hospital Rebuild presented the latest architect views of the hospital rebuild project.

Adam spoke about the work undertaken this far regarding the new hospital at Grey Base Hospital and the Integrated Family Health Centre. A long and robust discussion took place regarding Maori protocols. Adam will further this discussion with Francious, Lisa and Gary later in the week.

ACTION: Megan to arrange a teleconference with Adam, Francious, Lisa and Gary for further discussions.

Maori Health Plan

Kylie updated regarding the draft plan including a discussion about time frames and objectives within the plan. It was agreed that there will be a teleconference regarding the Maori health plan to ensure we meet the timeframes in good time. The process will be the same as last year where it will give Tatau Pounamu members the opportunity to have input into the plan.

Tatau Pounamu will also be provided with a copy of the draft workstream workplans that are being supplied in advance of your normal viewing through your key committee and other workstream leads. A timeframe advising of feedback to the Maori Health Plan and Draft Workstream Plans will be provided to you all in late February.

ACTION: Kylie to provide this update to Tatau Pounamu

MATTERS ARISING DECEMBER MEETING 2014

Item No	Meeting Date	Action Item	Action Responsibility	Reporting Status
4	29 January 2015	<p>Amendments for Tatau Pounamu Terms of Reference & Renewal of Memorandum of Understanding</p> <p>Email correspondence was provided to the Tatau Pounamu Chair from the Board Chair around the current MoU.</p> <p>A meeting will be arranged between the Tatau Pounamu Chair and Board Chair – Peter Ballantyne.</p> <p>The Chairs of Te Runugna O Ngati Waewae and Te Rununga O Makaawhio will align their discussions with regards to the MoU to the Tatau Pounamu meeting schedule to set a process of approval and sign off.</p>	<p>Chair</p> <p>Meeting arranged to take place in late December with both Board Chairs.</p> <p>Kay Jenkins has been approached to set this meeting in place.</p>	March Meeting
4	29 January 2015	<p>Maori Representative Appointment Requests</p> <p>A further update will be provided at the first meeting in 2015 around the other key workstreams that require Maori representation.</p>	Gary Coghlan, GM Maori	March Meeting
5	29 January 2015	Whanau Ora	On going discussion.	March Meeting
7	29 January 2015	<p>Cancer Screening</p> <p>Peter McIntosh to provide update to Tatau Pounamu around moves by the Ministry of Health to introduce prostate screening programme. Peter to source information about West Coast prostate cancer rates.</p>	<p>Peter McIntosh</p> <p>Prostate Screening</p> <p>The Ministry of Health does not have any current plans to introduce a universal national screening programme for prostate cancer. The Ministry have, however, embarked on a</p>	March Meeting

Item No	Meeting Date	Action Item	Action Responsibility	Reporting Status
			<p>review of referral, surveillance and management guidance documents for prostate cancer, with feedback from clinicians around the country closing on 20 February 2015. This feedback is to be reviewed and incorporated into the final guidance documents as appropriate.</p> <p>Prostate Cancer Rates for West Coast We requested data on the latest prostate cancer and other cancer rates for the West Coast region in comparison to national rates from the Ministry of Health, via the Southern Cancer Network, in December 2014. At the time of compiling this report, we are still waiting of the supply of the information. We have made several follow up requests for the data in the interim. We are hopeful that information might be made available to us before the next meeting.</p>	
9	4 December 2014	DNA Update Julie Lucas to come and provide a further update in the New Year.	General Manager, Maori	April Meeting
10.	4 December 2014	Health Services for Westland District Ongoing discussions	Chair, Tatau Pounamu	March Meeting

Item No	Meeting Date	Action Item	Action Responsibility	Reporting Status
11.	4 December 2014	Rangatahi Ongoing discussions	Chair, Tatau Pounamu	March Meeting

DISCUSSION ITEMS

TO: **Members**
 Tatau Pounamu Advisory Group

SOURCE: **Chair**

DATE: **12 March 2015**

Report Status – For: Decision ☐ Noting ☒ Information ☐

1. ORIGIN OF THE REPORT

The verbal and in person updates from the following:

- Rangatahi
- Philip Wheble – Alliance Update and Grey/Westland Update (*Acting for Mark Newsome*)
- Karyn Bousfield, Director of Nursing in attendance

2. RECOMMENDATION

That the Tatau Pounamu Advisory Group notes the updates.

CHAIR'S UPDATE

TO: **Members**
 Tatau Pounamu Advisory Group

SOURCE: **Chair**

DATE: **12 March 2015**

Report Status – For: Decision ☐ Noting ☒ Information ☐

1. ORIGIN OF THE REPORT

The verbal update.

2. RECOMMENDATION

That the Tatau Pounamu Advisory Group notes the report.

A verbal update will be given at the meeting.

TO: Chair and Members
Tatau Pounamu Advisory Group

SOURCE: General Manager Maori Health

DATE: 12 March 2015

Report Status – For:	Decision	<input type="checkbox"/>	Noting	<input checked="" type="checkbox"/>	Information	<input type="checkbox"/>
----------------------	----------	--------------------------	--------	-------------------------------------	-------------	--------------------------

1. ORIGIN OF THE REPORT

This report is provided to Tatau Pounamu Manawhenua Advisory Group as a regular update.

2. RECOMMENDATION

That the Tatau Pounamu Manawhenua Advisory Group notes the report.

3. SUMMARY

Whanau ora

I have been working with the CEO for Putahitanga and members of the Buller community to organise the next whanau ora hui in the Buller. This is scheduled for March the 9 at the Bridge Club in Westport. The key areas for discussion will be about the Independent Facilitator. Te Putahitanga has been able to source an independent facilitator. This person has substantial international experience in community development and working with communities to develop cultural, social, health and economic opportunities. The facilitator's suitability will be discussed before proceeding any further with potential engagement.

Investment and Grant Funding - Te Pūtahitanga has heard the feedback at the December meeting about gaps in services and the difficulty in accessing and participating in culture such as Marae, and Te Reo. Te Pūtahitanga has considered this a priority in understanding the funding into the Buller Community and has undertaken further work to seek out opportunities. There is a potential to consider an innovative funding approach. This idea is early in its formation and Te Pūtahitanga will seek Maori community input before further work is progressed.

Maori Representatives

Considerable effort has gone into establishing a database of Maori who are considered to be valuable representatives onto key DHB working groups and committees.

The key work stream priorities have been mostly represented however there are still a couple of vacant positions on the following groups as listed below.

- Local Cancer Network
- Heart & Respiratory
- Child & Youth

There is also likely to be further requests from key committees and workstreams into the future who see a need for Maori representation by way of the appointments policy.

Draft Maori health plan and Workstreams plans

The first draft of the Maori Health Plan and the Workstream plans have been developed for consultation. There is a strong correlation between the Maori Health Plan and the workstream plans because these are the primary accountability documents for the West Coast DHB and will ensure a shared approach and focus on the Maori Health Plan 2015.

Our approach in 2015/2016 is to continue to build on the actions and strategies from last year working closely with workstreams and clinical leads.

TO: Chair and Members
FROM: Portfolio Manager, Maori Health
DATE: 12 March 2015

Report Status – For: Decision ☐ Noting ☒ Information ☐

1. ORIGIN OF THE REPORT

This report is provided to Tatau Pounamu Manawhenua Advisory Group as a regular update.

2. RECOMMENDATION

That the Tatau Pounamu Manawhenua Advisory Group notes the report.

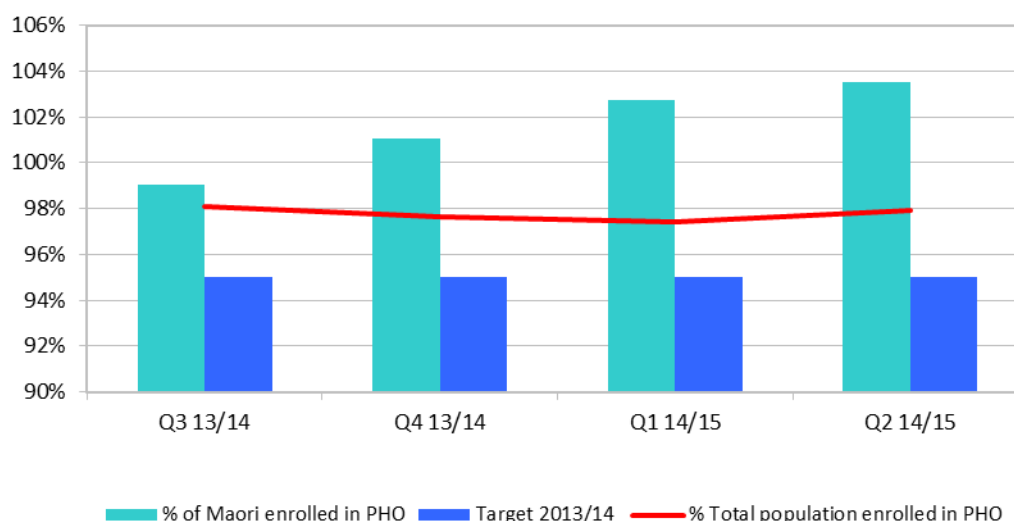
3. SUMMARY

Maori Health Quarterly Report – Q2, 2014/15

Access to care

Percentage of Maori enrolled in the PHO

PHO enrolment using 2013 Census population data



* 2006 census population was used as the denominator.

ACHIEVEMENTS/ISSUES OF NOTE

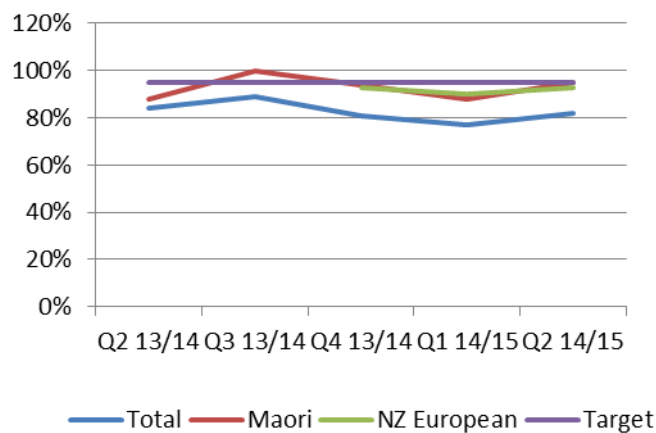
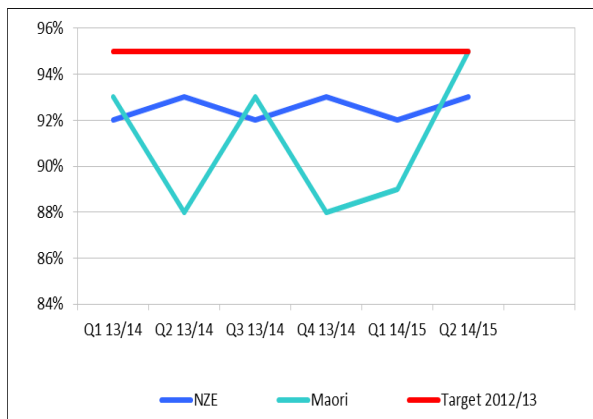
Enrolment in PHO: Using the 2013 population census figures 103% of Maori were enrolled with the PHO as at 31 December 2014. 3283 Maori were enrolled in quarter 2 compared to 3258 in quarter 1 and increase of 25. Maori enrolled in the PHO has increased by 143 over the last 4 quarters.

The Census data shows total Maori population is 3171.

Child, Youth and Maternity

NEW Immunisation HT: Eight-month-olds fully immunised

Immunisation: Two-year-olds fully immunised



Eight-month-old immunisation: 95% of Maori babies have been immunised on time at 8 months of age in quarter 2 – 19 babies out of 20 eligible for this quarter meaning only 1 Maori baby is not immunised on time. This is compared to 93% of non-Maori babies where 42 from 45 eligible babies have been immunised.

Two-year-old immunisation: 88% of Maori 2 year olds have been immunised on time in Quarter 2 – 15 from 17 eligible babies. This is compared to 96% NZ European babies - 76 from 79 eligible babies

Although we have not met the target, **82%** of all 8-month-olds were fully immunised during Quarter 2—we have achieved a 5% increase with only one child missing the milestone age. Strong results were achieved for Pacific and Asian at 100% with Māori at 95%. NZ European performance increased 5% to 93%

This quarter has seen good outcomes for Pacific (100%) and NZE (96%).

Breastfeeding Support: The community lactation consultancy and breastfeeding advocate have made 137 contacts including 54 face to face (home visits/clinic) to provide breastfeeding support. There have been 7 Maori clients in Quarter 2. Of the 54 newborn contacts, 17 required further follow up.

The newborn enrolment forms continue to be an effective way to make links with new mums, promote support services and directly check in to see how breastfeeding is going.

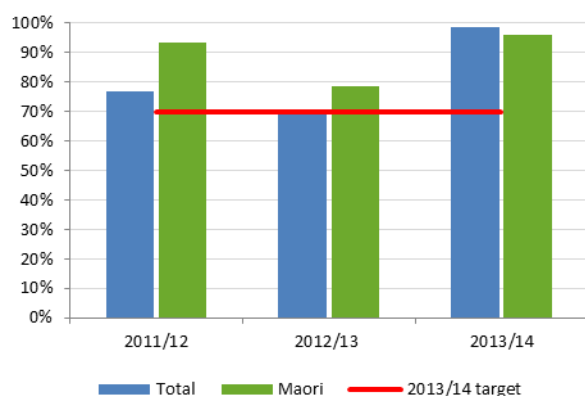
Mum 4 Mums

Four new Mum4Mum Peer Counsellors completed the training in Westport this quarter. These included: 1 Maori, 1 NZ European and 2 other. Planning and recruitment for the next Mum4Mum training in Greymouth begins February 2015.

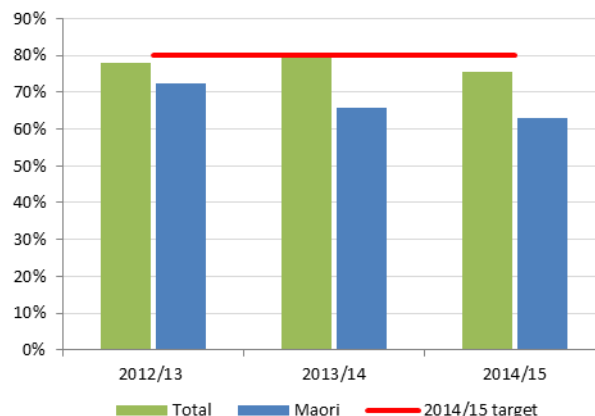
Newborn Enrolment: The Newborn enrolment form and process is now embedded into services. This ensures timely enrolment to 5 services; Community Oral Health service, National Immunisation Register, General Practice, Breastfeeding Support, Well Child/Tamariki ora service.

More Heart & Diabetes checks

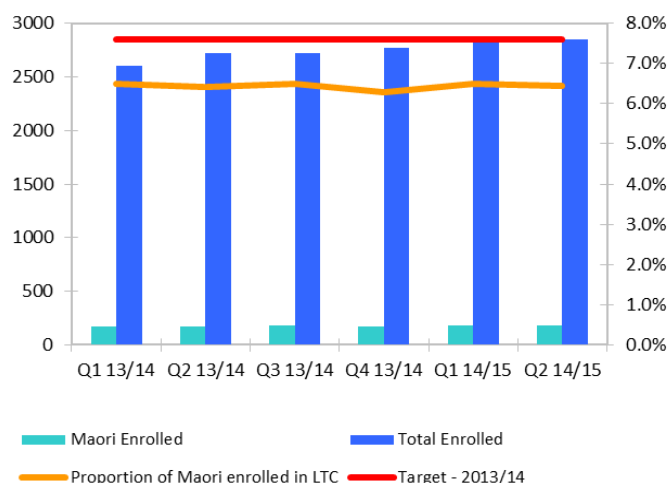
Diabetes Annual Review: % of people estimated to have diabetes who have had an annual check during the year



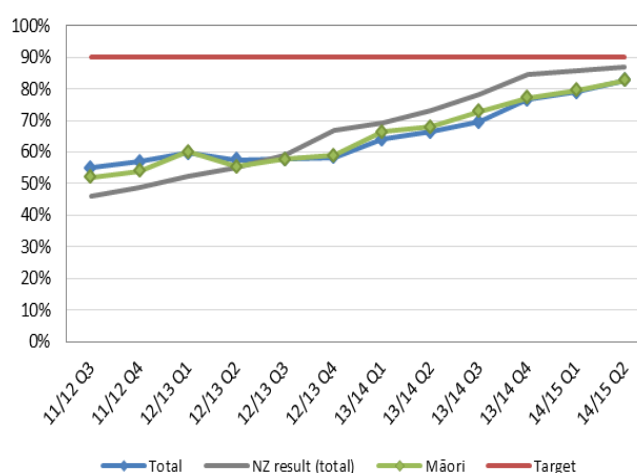
Diabetes Good Management: % of people who have HBA1c levels at or below 8.0 when assessed at their annual check



Number of people enrolled in the Long Term Condition Programme



More Heart and Diabetes Checks Health Target: % of eligible PHO population having had a CVD risk assessment in the last 5 years



Diabetes: Maori still continue to show a good rate of access to Diabetes Annual Reviews however management of their diabetes could be improved. 86% of Maori with diabetes have had Retinal Exams, 64% show HBA1c levels at or below 8.0, 68% are non-smokers and 68% are on statins.

The Ministry of Health no longer measure diabetes annual reviews undertaken as a percentage of the overall population estimated to have diabetes. The More Heart and Diabetes Checks national health target now covers this and as such the quarterly graph for diabetes annual reviews above now shows the actual number of reviews that have been undertaken year to date. Of the 381 people who had their diabetes review during the September quarter, 75.4% of the overall population had good diabetes management. Maori results were lower at only 63%. Our target for diabetes good management is 80%.

CVD Health Target

‘More heart and diabetes checks’ will measure the number of completed cardiovascular Risk Assessments (CVRA) for all eligible persons within the last five years (which includes a diabetes check). The national goal is 90% since 1 July 2013.

Practice teams continue to actively identify and invite eligible people to nurse-led clinics to have their cardiovascular risk assessed, with a special focus on high-need people who haven’t been screened.

Maori make up 8.8% of completed CVRAs this quarter. By comparison, Maori make up 9.8% (1016) of the eligible cohort for CVRA on the West Coast. (The eligible age range for Maori is male 35-74 years and for female 45-74 years).

The smoking profile for CVRAs completed this quarter for Maori is 49% not smoking compared with other ethnicities screened not smoking 77%. This will be addressed within the Maori Cessation Plan.

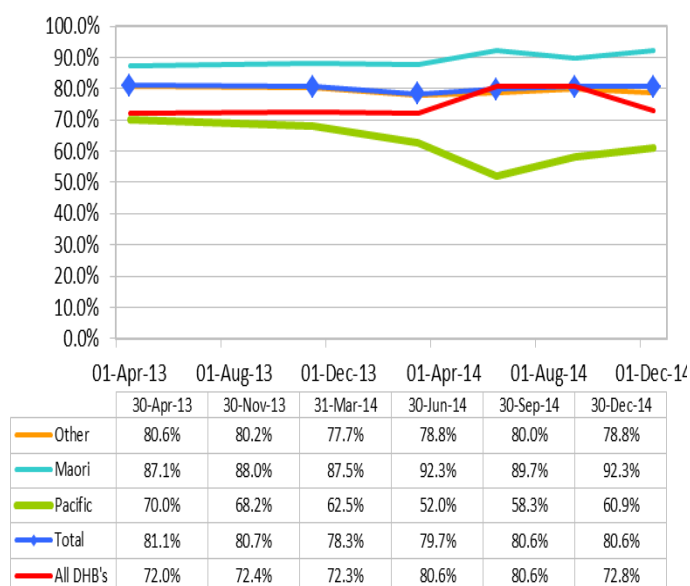
The newly appointed Kaupapa Maori Nurse in Greymouth is working on overdue CVRA lists with the practices and as part of the Maori Cessation Plan the AKP Cessation Practitioner is working with practices to identify those Maori enrolled who are registered as a smoker but not been give brief advice. To date this has been very successful with a high number of those contacted by Joe Mason requesting cessation support.

Green Prescription: Quarter 2 data shows from 72 total referrals to the Green Prescription programme in the Grey district for 8 were for Maori and 4 referrals in the Buller district were for Maori which is a good increase from 1 in Quarter 1. The major group of conditions this quarter is people with elevated body mass index (BMI), followed by depression/anxiety and cardiovascular disease.

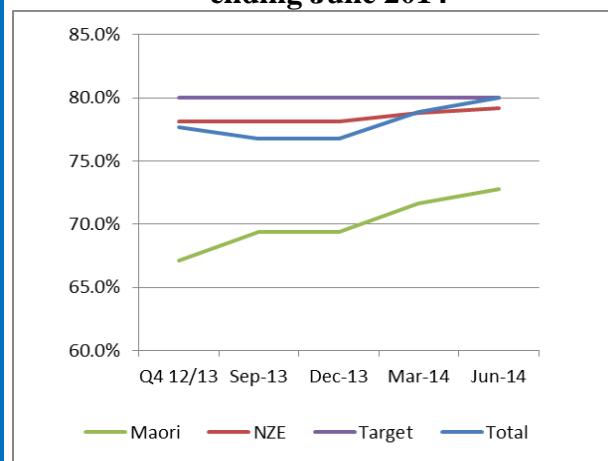
Long Term Condition Management (LTC): 183 Maori are enrolled in the Long Term Conditions programme as at Dec 31 2014. For quarter 2 Maori enrolments makes up 6.9% of all enrolment in the LTC programme. The target is 7.6%. For comparison Maori make up 6.2% of the enrolled population at the primary practices aged 45 years and above. Collaboration with Poutini Waioira to integrate services to support Maori identified as having LTCs is occurring. There is on-going work within practices to identify eligible people and increase enrolments in level 2 and level 3.

Cancer

Percentage of eligible Maori women (45-69) receiving breast screening examination in the last 24 months ending



Percentage of eligible Maori women (25-69) receiving cervical screening in the last 3 years ending June 2014



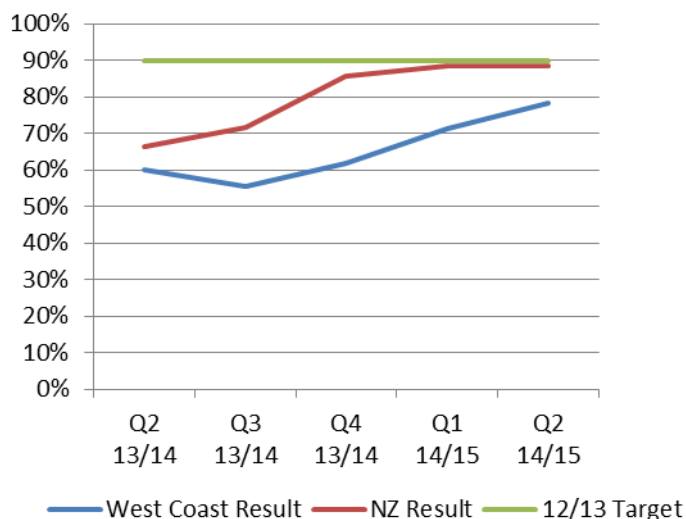
ACHIEVEMENTS/ISSUES OF NOTE

Breast Cancer Screening: Approximate 80.6% of all eligible women aged 45-69 age-groups on the West Coast have undergone breast screening for the period ending Dec 2014. The coverage for eligible Maori women (91.57%) continues to be higher compared to all other ethnicities on the West Coast. The West Coast DHB is the lead DHB for this target across all other DHBs nationwide with the next closest being Nelson Marlborough with 85% of eligible Maori women being screened.

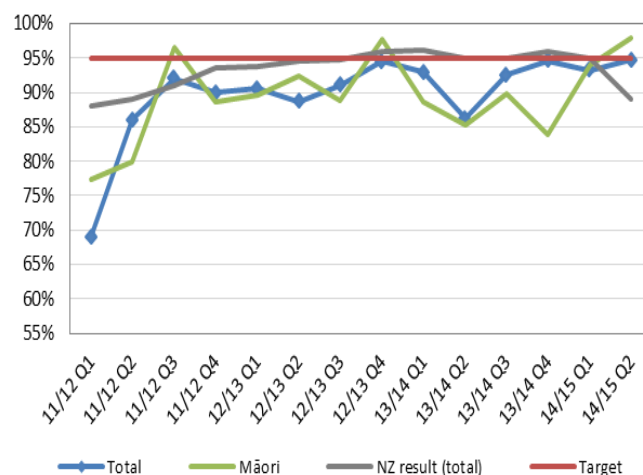
Cervical cancer screening: At the end of June 2014, the preliminary three year coverage result for cervical screening on the West Coast non-Maori was 79.2% - 5755 from 7270 eligible. The coverage rate for eligible Maori women is at 72.8% - 512 from 703 eligible, an increase from last quarter and a sustained increase from June 2011 where the coverage was just 52.1%. The process for cervical screening is being embedded into the practices with overdue priority lists regularly being forwarded through to the Maori cervical screening. Additionally to this the Maori cervical screener is working very closely with Poutini Waioira to locate those hardest to reach and holding community clinics.

SMOKING CESSATION

Primary Smokefree Health Target: Smokers attending primary care given advice & help to quit



Secondary Smokefree Health Target: Hospitalised smokers given quit advice & help



ACHIEVEMENTS/ISSUES OF NOTE

Primary Smokefree Health Target:

There is a comprehensive plan in place to improve this target. Joe Mason Aukati Kai Paipa Smoking Cessation Co-ordinator is working with Poutini Waiora to streamline the pathway for whanau into this service. Additionally through the Healthy West Coast Workstream a plan is being developed that will give recommendations on the prioritisation of Maori access to all smoking cessation services. As part of this plan Joe Mason the Aukati Kai Paipa smoking cessation practitioner has been provided with a practice list of Maori from High Street Medical Centre who are recorded as smokers but had not yet been offered ABC. Of those that Joe has cold called he has had a great success rate of approximately 30% who are now on the AKP smoking cessation programme. The next practice that Joe will be targeting will be Westland Medical Centre.

Aukati Kai Paipa: For the half year from July 1 to Dec 31 2014 the AKP service has worked with 47 new clients, 25 who identify as Maori with a 39% validated abstinence rate at 3 months. The Aukati Kai Paipa cessation adviser is working more closely with practices and Poutini Waiora which is resulting in increased referrals to the service.

PHO Coast Quit Programme: For the quarter Oct to Dec 2014 .10.7% (15) Maori accessed the Coastquit cessation service an decrease from last quarter of 3. This service has a poor access rate for Maori and this is one issue that we are aiming to address in the Maori Cessation plan.

Secondary Smokefree Health Target: In Quarter 2, West Coast DHB staff provided **94.7%** of hospitalised smokers with smoking cessation advice and support –meeting the 95% target.

Report prepared by:

Kylie Parkin, Maori Health

Report approved for release by:

Gary Coghlan, General Manager Maori Health

TO: Chair and Members
Community and Public Health & Disability Support Advisory Committee

SOURCE: Planning & Funding
Alliance Leadership Team

DATE: 12 March 2015

Report Status – For:	Decision	<input type="checkbox"/>	Noting	<input checked="" type="checkbox"/>	Information	<input type="checkbox"/>
----------------------	----------	--------------------------	--------	-------------------------------------	-------------	--------------------------

1. ORIGIN OF THE REPORT

This report is a standing agenda item, highlighting the progress made by the West Coast Alliance.

2. RECOMMENDATION

That the Committee;
i. Notes the Alliance Update.

3. SUMMARY

Progress of Note:

▪ Mental Health Workstream

- The Buller mental health team continues to progress the locality based services for the Buller region. Workstream activity is now moving to work with the Specialist Mental Health Services to support the locality models.

▪ Complex Clinical Care Network (CCCN)

- Work continues with upskilling Home Based Support Providers to enable them to deliver the restorative model of care along with supported discharge model. Relationships between primary care, allied health, community services and hospital staff have strengthened with continued conversations on how all parties can work together to deliver an integrated model of care.
- In Buller a new process has been identified and is currently being piloted for supporting the coordination and delivery of care for people with complex needs on the West Coast. The approach includes the redevelopment of supporting services to provide a full range of care and support options coordinated seamlessly through an integrated access system.
- The business case for the Integrated Falls Prevention/Fracture Liaison Service approach is being prepared and will be presented for approval this quarter. We anticipate following approval, the first phase of the Integrated Falls/FLS (a 0.5 FTE Community Falls champion providing services to the Grey and Westland areas) will be in place by Q4. Confirmation on timeframes for full implementation of the integrated service will be able to be confirmed following submission and approval of the business case.

- West Coast DHB Falls/FLS representatives have already participated in the first joint Falls/FLS HOPSLA & South Island Quality and Safety SLA meeting, with the next planned for April 2015. These collaborative meetings are assisting in the development of consistent approaches, pathways and outcome measurement for Falls Prevention and FLS delivery across the region.
- **Grey/Westland & Buller Family Health Services (IFHS)**
 - Meetings between the three Greymouth practices are underway to discuss and develop a single process for unplanned and acute care. This is in preparation for the three practices coming together under the single roof of the Grey IFHC.
 - The team is also looking at how the huddle meetings that have commenced in Buller can be used in the Grey practices.
 - A pilot of mobile devices is underway with a tablet being trialled to connect with patient information systems while off-site.
- **Healthy West Coast**
 - HWC have now endorsed the plan to better target Maori smokers for engagement in cessation services. This now includes Poutini Waioara engagement through Greymouth and Buller's Kaupapa Maori Nurses.
 - The implementation of Patient Dashboard has produced good results in terms of improving performance against the Primary Care Health Targets.
 - Work is progressing to employ a Community Nutritionist to support Diabetic and Pre-Diabetic Green Prescription clients. Appointment expected early Quarter 3.
- **Child and Youth**
 - Planning has begun towards developing the Transalpine partnership in relation to Community Oral Health Services. A joint Canterbury DHB & West Coast DHB Oral Health services meeting will take place to determine the best model of partnership from both the clinical and operational perspectives.
 - The pilot of the Secret Shopper project is complete with results and feedback provided to the next group of youth to undertake these visits. The first follow up group have now completed visits in Greymouth and Hokitika.
- **Pharmacy**
 - Planning continues for the use of a design lab approach for modelling allocated space for the provision of pharmacy services within the new Grey Integrated Family Health Centre.
 - All Greymouth and Hokitika pharmacists now have their Medicines Use Review accreditation.

Report prepared by:

Jenni Stephenson, Planning & Funding

Report approved for release by:

Stella Ward, Chair, Alliance Leadership Team

TATAU POUNAMU MANAWHENUA ADVISORY GROUP 2015 MEETING SCHEDULE

DATE	TIME	VENUE
Thursday 29 January 2015	3.00 – 5.00pm	Kahurangi Room, Mental Health
Thursday 12 March 2015	3.00 – 5.00pm	Kahurangi Room, Mental Health
Thursday 16 April 2015	3.00 – 5.00pm	Kahurangi Room, Mental Health
Thursday 18 June 2015	3.00 – 5.00pm	Board Room, Corporate Services
Thursday 20 August 2015	3.00 – 5.00pm	Kahurangi Room, Mental Health
Thursday 22 October 2015	3.00 – 5.00pm	Kahurangi Room, Mental Health
Thursday 3 December 2015	3.00 – 5.00pm	Kahurangi Room, Mental Health

**MEETING DATES & TIMES
ARE SUBJECT TO CHANGE**