

TATAU POUNAMU

Ki Te Tai o Poutini



MANAWHENUA ADVISORY GROUP

22 October 2015

@ 3.00pm PHO, Above Speights Ale House

Agenda and Meeting Papers

**ALL INFORMATION CONTAINED IN THESE
COMMITTEE PAPERS IS SUBJECT TO CHANGE**

TATAU POUNAMU ADVISORY GROUP MEETING
Thursday 22 October @ 3.00 pm

KARAKIA

ADMINISTRATION

Apologies

1. Interest Register

Update Interest Register and Declaration of Interest on items to be covered during the meeting.

2. Confirmation of the Minutes of the Previous Meeting

20 August 2015

3. Carried Forward/Action List Items

4. Discussion Items/Presentations/Presenters

- | | |
|----------------------------------------------------------------------|--------|
| ▪ Dr Cheryl Brunton, Community Public Health – October Report Update | 3.30pm |
| ▪ Julie Lucas, Discharge Planning Update | 4.15pm |
| ▪ Mal Robson – West Coast Suicide Prevention Strategy update | 4.30pm |
| ▪ Philip Wheble – Grey/Westland Update | 4.45pm |
| ▪ Gary Coghlan/Francois Tumahai – Hospital Rebuild/IFHC | |
| ▪ Gina Duncan - Whanau Ora Update | |
| ▪ Kylie Parkin - Improving Maori Cancer Pathway Update | |

REPORTS

- | | |
|-----------------------------------------|-----------------------------------|
| 5. Chairs Update – Verbal Report | Chair |
| 6. GM Maori Health – Report | Gary Coghlan, Maori Health |
| 7. Alliance Update | Philip Wheble, Planning & Funding |

INFORMATION ITEMS

- 2015 Tatau Pounamu Meeting Schedule
- 2015 Board Meeting Schedule
- 2016 Board Meeting Schedule
- WCDHB Maori Health Profile
- Improving the Cancer Pathway for Maori in Te Tau Ihu
- Southern Cancer Network Newsletter Tatau Pounamu Meeting Schedule

ESTIMATED FINISH TIME 5.00pm

TATAU POUNAMU ADVISORY GROUP MEMBERS INTEREST REGISTER

Member	Disclosure of Interest
<p>Lisa Tumahai (Chair) Te Runanga O Ngati Waewae</p>	<p>Directorships</p> <ul style="list-style-type: none"> Chair - Arahura Holdings Ltd 2005 – currently Chair -Te Waipounamu Maori Heritage Centre 2006 – currently <p>Committees</p> <ul style="list-style-type: none"> Te Waipounamu Maori Cancer Network Committee 2012 - currently Te Runanga O Ngati Waewae Incorporated Society 2001 – currently Chair – Te Here (subcommittee Te Runanga o Ngai Tahu 2011 - currently) Member Maori Advisory Group to Vice Chancellor Canterbury University 2012 - currently <p>Trustee</p> <ul style="list-style-type: none"> West Coast PHO 2013 – currently Poutini Waiora – April 2013 - currently Te Runanga O Ngai Tahu - Deputy Kaiwhakahaere (2011 - currently) Te Poari o Kati Waewae Charitable Trust – (2000 – currently) Husband Francois Tumahai.
<p>Francois Tumahai Te Runanga O Ngati Waewae</p>	<ul style="list-style-type: none"> Chair, Te Runanga o Ngati Waewae Director/Manager Poutini Environmental Director, Arahura Holdings Limited Project Manager, Arahura Marae Project Manager, Ngati Waewae Commercial Area Development Member, Westport North School Advisory Group Member, Hokitika Primary School Advisory Group Member, Buller District Council 2050 Planning Advisory Group Member, Greymouth Community Link Advisory Group Member, West Coast Regional Council Resource Management Committee Co-Chair Poutini Waiora Board Member, Grey District Council Creative NZ Allocation Committee

Member	Disclosure of Interest
	<ul style="list-style-type: none"> ▪ Member, Buller District Council Creative NZ Allocation Committee ▪ Trustee, Westland Wilderness ▪ Trustee, Te Poari o Kati Waewae Charitable ▪ Trustee, Westland Petrel ▪ Advisor, Te Waipounamu Maori Cultural Heritage Centre ▪ Trustee, West Coast Primary Health Organisation Board ▪ Wife is Lisa Tumahai, Chair
<p>Elinor Stratford West Coast District Health Board representative on Tatau Pounamu</p>	<ul style="list-style-type: none"> ▪ Member Clinical Governance Committee, West Coast Primary Health Organisation ▪ Committee Member, Active West Coast ▪ Chairperson, West Coast Sub-branch-Canterbury Neonatal Trust ▪ Committee Member, Abbeyfield Greymouth Incorporated ▪ Trustee, Canterbury Neonatal Trust ▪ Board Member of the West Coast District Health Board ▪ Member of the Southern Regional Liaison Group for Arthritis New Zealand
<p>Gina Duncan Kawatiri</p>	<ul style="list-style-type: none"> ▪ Maori Community Representative – Incident Reporting Group, Buller Hospital ▪ Buller Maori Representative on the Buller Integrated Family Healthcare Workstream ▪ North School Iwi Representative, Board of Trustee ▪ Member of MSD Service Provider for Youth ▪ Buller Reap Youth Co-ordinator
<p>Wayne Secker Mawhera</p>	<ul style="list-style-type: none"> ▪ Trustee, WL & HM Secker Family Trust ▪ Member, Greymouth Waitangi Day Picnic Committee
<p>Paul Madgwick Te Runanga o Makaawhio</p>	<ul style="list-style-type: none"> ▪ Chairman, Te Runanga o Makaawhio ▪ Editor - Greymouth Star, Hokitika Guardian, West Coast Messenger. ▪ Board member, Poutini Waiora
<p>Susan Wallace Te Runanga o Makaawhio</p>	<ul style="list-style-type: none"> • Tumuaki, Te Runanga o Makaawhio • Member, of the West Coast District Health Board • Member, Te Runanga o Makaawhio • Member, Te Runanga o Ngati Wae Wae • Director, Kati Mahaki ki Makaawhio Ltd

Member	Disclosure of Interest
	<ul style="list-style-type: none"> • Mother is an employee of West Coast District Health Board • Father member of Hospital Advisory Committee • Father employee of West Coast District Health Board • Director, Kōhatu Makaawhio Ltd • Appointed member of Canterbury District Health Board • Co-Chair, Poutini Waiora Board ▪ Area Representative-Te Waipounamu Maori Womens' Welfare League

MINUTES OF THE TATAU POUNAMU MANAWHENUA ADVISORY MEETING St Johns, Waterwalk Road @ West Coast DHB, Greymouth, on Thursday 20 August 2015 @ 3.00pm

PRESENT: Lisa Tumahai, Te Runanga O Ngāti Waewae (Chair)
Francois Tumahai, Te Rūnanga O Ngāti Waewae
Paul Madgwick, Te Runanga O Makaawhio
Elinor Stratford, West Coast DHB Representative
Susan Wallace, Te Runanga o Makaawhio
Gina Robertson, Maori Community Kawatiri
Wayne Secker, Maori Community Mawhera

IN ATTENDANCE: Gary Coghlan, General Manager Māori Health
Kylie Parkin, Maori Health
Cheryl Brunton, Community Public Health
Mark Newsome, General Manager Grey/Westland
Philip Wheble, Team Leader Planning & Funding
Mal Robson, Manager Maori Mental Health

APOLOGIES: Susan Wallace, Te Runanga o Makaawhio

MINUTE TAKER: Megan Tahapeehi, Maori Health

WELCOME / KARAKIA
Gary Coghlan

AGENDA / APOLOGIES

1. DISCLOSURES OF INTEREST

Change

Gina Lee Robertson to ***Gina Lee Duncan***

Add

- Buller High School Board of Trustees
- New role Te Putahitanga (Long version)

Remove

- MSD
- Buller Reap

Elinor Stratford

Remove

- Chair of Victim Support Grey Westland. Have resigned. Is in recess.

ACTION: Megan Tahapeehi

2. MINUTES OF THE LAST MEETING

For correction – Spelling **Page 4. Prostrate should read Prostate**

Minutes were agreed

Moved: Francois Tumahai

Second: Elinor Stratford

Carried

3. Carried forward/Action List Items

No. 4 – Tatau Pounamu MOU

This is still with Greg Brogden (DHB legal council) awaiting his response.

Carried over.

No. 4 – Maori Representative Appointment Requests

Support the appointment of Richelle Shaper to the Child & Youth Workstream

Moved: Gina Roberston

Second: Wayne Secker

Carried:

Kylie Parkin who is the Chair of the Child & Youth Workstream was advised through this meeting of the appointment.

ACTION: Megan to contact Richelle and advise of her appointment. Kylie will also make contact about the meeting and advise of upcoming dates

7. Southern Cancer Network Information

Carried over to next meeting. Peter McIntosh to provide this update.

9. DNA and Discharge Planning

Julie Lucas has provided a written update. Carried over next meeting

10. Health Services for Westland

Carried over to agenda.

11. Rangatahi

The programme is close to being finalised for the September visit. Still require a time and day for the introduction of speakers from Ngati Wae Wae & Maakawhio Runanga for the programme.

Paul Madgwick confirmed that this will take place on Wednesday.

ACTION: Megan to Liase with Susan and Paul an actual time and venue for the discussion.

12. Hokitika Rest home

Planning & Funding are not aware of any request in recent times from Alan Bryant to extend facilities or increase bed numbers.

Planning and Funding look after all the aged care facilities around the West Coast. A strategy paper is being prepared to look at the future needs of aged care, including the requirements of residential beds and the type of beds that will be required.

The DHB is looking at a whole of system view on aged care and is progressively increasing its ability for us to provide proactive wrap around services to our aged population.

A G E N D A

4. *Dr Cheryl Brunton & Claire Roberston – Community Public Health*

Claire spoke to her report.

Bruce Bay Hui

Will be going ahead. Idea at this stage is to think about doing a modified version of the Arahura hui. Looking to do it early next year rather than this year.

Spirometry Clinic

A really good health clinic for Maori and a blue print for the future. Collective learning and collaboratively with key health networks i.e. Poutini Waiora, PHO, WCDHB.

Mana Tamarki

Moya has asked Community Public Health to help develop a programme. 6 week programmes with different topics ie; smokefree, cervical screening, sexual health, HPV vaccination. Working on this currently and each of these sessions will involve jointly working with key health providers to pull together a programme. Looking to run this in October.

4. *Mal Robson, Maori Mental Health Manager – Introduction*

Mal Robson provided a presentation about his role and what his priorities are for Maori Mental Health for the West Coast. *See presentation in appendix*

5. *Mark Newsome General Manager Grey/Westland Update*

Mark provided the follow key updates:

- *Primary Care* – a number of changes around leadership of nursing in South Westland. Looking at putting new structure to enable adequate support and supervision. Leave coverage. Proposal for change in place.
- *Rural Academic/Grey Medical* – How we use these facilities and the model of care as we move forward to enable more efficient access to primary care is being worked on and staff engaged in a process to review this
- *Reefton* – Formalised a Reefton workstream that will sit under the alliance. Determining TOR and Membership. Looking at what Reefton services will look like into the future. Very positive.

- *Facilities* – Prelim phase was signed off by Ministers of Health and Finance about a month ago. Moving into detail design phase. Mock up structure was a very useful exercise. Hope to see action on site in September in terms of land clearance.
- *Buller IFHC* – Work coming together with master plan and concept design. Waiting for Ministry finalisation to pull concept plan together.
- *DNA* – Rate is high compared to nationally. It has come down for a number of reasons over last 12 months. Have moved to e-texting that will help with the reduction.
- *Discharge Planning* – A lot of work is happening. Much of the focus is around hospital but also want to include primary and community. Want emphasis on communication. Continued focus.
- *Workforce* – A lot of work with senior medical staff. Just brought together a medical workforce plan. What we are trying to achieve with local and trans alpine perspective. Out for review.
- *Junior Workforce* – Currently have silos in terms of MECA's and run descriptions (industrial issues) want flexible workforce. Looking at the training we provide to enable the West Coast a place where this workforce want to come. Nursing also being looked into. Coming together well.
- *Patient Transfer Service* – Been operating since May. Has been well utilised for door to door service from Chch to Greymouth. Buller still being looked at. St Johns has been supporting. Outcomes have been positive for patients. Routine transfers have been resulting in not using ambulances.
- *Aged Residential Care* – Alan Bryant looking to open partially mid September. Residents are currently being cared for amongst a number of services.
- *Buller* – Proposal to exit aged residential care. This is tracking along.
- *Information Services Group* – Just signed off Strat Plan. Connects CDHB more to the WCDHB. IT is the enabler to meet achievements. Prioritising and resourcing will be met by Canterbury where shortfalls are here.
- *Health Targets* – Continue to meet these. Faster Cancer is behind, but being managed and no patients missing out, more a data issue.
- *Mental Health* – David Stoner has left as Clinical Director. In the interim Cameron Lacey is acting as Clinical Director.
- *RCA's* - Have been achieved 50%.

- *Suicide Prevention Plan* – Just been signed off by Ministry. What this means operational will be reported back on at the next Tatau Meeting.
- *Chief Medical Officer* – Have advertised for 3x medical directors. Quality Safety/Medical Council Legal Issues/Facilities Development – These close tomorrow. Hope to appoint over next couple of weeks.

Suicide Prevention Plan – Just been signed off by Ministry. What this means operational will be reported back on at the next Tatau Meeting.

Chief Medical Officer – Have advertised for 3x medical directors. Quality Safety/Medical Council Legal Issues/Facilities Development – These close tomorrow. Hope to appoint over next couple of weeks.

7. Maori Health Plan Update – Kylie Parkin

Kylie provided a final copy to all present at the meeting. Hard copies are also being sent to key departments and organisations.

6. GM Maori Health Report

Training for staff – Buller (Cultural Competencies) Buller Medical Centre.

ACTION: Gina & Gary to have a conversation with regards to Poutini Waiora also being consulted in the training.

8. Alliance Update

Phillip Wheble spoke to the Alliance update report.

Child & Youth Workstream – Qualifications. Birth rates are low. Tatau Pounamu very interested in this piece of work.

***Next Meeting 22 October 2015
3.00 – 5.00pm PHO Offices (Above Speights Ale House)***

MATTERS ARISING AUGUST MEETING 2015

Item No	Meeting Date	Action Item	Action Responsibility	Reporting Status
4	20 August 2015	Amendments for Tatau Pounamu Terms of Reference & Renewal of Memorandum of Understanding Amendments have been made to the TOR and MOU. These are to be finalised through Greg Brogden who is legal council for the DHB.	MOU and TOR to be finalised through the Board approval process once confirmed by legal services team.	September Meeting
4	20 August 2015	Maori Representative Appointment Requests The Buller Child & Youth Workstream appointment was agreed.	Kylie Parkin, Chair of Child & Youth Workstream to make contact	September Meeting
5	20 August 2015	Whanau Ora On going discussion.	Chair	September Meeting
7	20 August 2015	Cancer Screening An update from the Local Southern Cancer Network will be provided.	Peter McIntosh to provide written update	September Meeting
9	20 August 2015	DNA Update Julie Lucas will look to provide a verbal update at the September meeting.	General Manager, Maori	September Meeting
10.	20 August 2015	Health Services for Westland District Ongoing discussions A member advised that there has been further contact from the South Westland Community. Susan Wallace has met with the General Manager from WCDHB and has had a meeting in	Susan Wallace	September Meeting

Item No	Meeting Date	Action Item	Action Responsibility	Reporting Status
		Franz Joseph. They are organising a local hui with the community, potentially at the end of July. This is ongoing and taken to the community for discussion to see if they can address.		
11.	20 August2015	Rangatahi Ongoing discussions	Chair, Tatau Pounamu	September Meeting

TO: **Members**
 Tatau Pounamu Advisory Group

SOURCE: **Chair**

DATE: **22 September 2015**

Report Status – For:	Decision <input type="checkbox"/>	Noting <input checked="" type="checkbox"/>	Information <input type="checkbox"/>
----------------------	-----------------------------------	--------------------------------------------	--------------------------------------

1. ORIGIN OF THE REPORT

The verbal and in person updates from the following:

- Dr Cheryl Brunton, Community Public Health – Report Update
- Mal Robson, Maori Mental Health Manager – Suicide Prevention Plan Update
- Philip Wheble - Grey/Westland Update
- Julie Lucas – Discharge Planning Update
- Gary Coghlan/Francois Tumahai – Hospital Rebuild & IFHC
- Gina Duncan – Whanau Ora update
- Kylie Parkin – Cancer Pathway Update

2. RECOMMENDATION

That Tatau Pounamu Advisory Group notes the updates.

REPORT TO TATAU POUNAMU COMMUNITY AND PUBLIC HEALTH (CPH)

October 2015

Stoptober

The West Coast Tobacco Free Coalition is supporting Stoptober again this year. This is the second time that this nationwide stop smoking challenge has been held in New Zealand. Stoptober is coordinated by Action on Smoking and Health (ASH) staff in Auckland who coordinate national media (including social media) and supply resources for promoting Stoptober in the community. There has been great media coverage about Stoptober in West Coast newspapers. Stoptober posters have been widely distributed to NGOs, government departments, dentists, social service agencies and NGOs. Posters were also put up in a number of public places up and down the West Coast. Posters and leaflets about Stoptober and cessation options were also displayed around the DHB.

During September the Coalition held three sessions at local cafés in Hokitika, Greymouth and Westport for people thinking about stopping smoking to have a chat and a free hot drink. Coalition members were available to discuss quitting and provide information about cessation options on the West Coast. On Monday 28th September, members of the Coalition spent the day at The Warehouse in Greymouth talking to people about quitting and smokefree lifestyles. They had Stoptober packs to give to members of the public for their own use and to share with others in their organisation or workplace.



Members of the West Coast Tobacco Free Coalition at Tuhuru Marae on 10th September 2015

Aukati KaiPaipa

Our new Aukati KaiPaipa (AKP) practitioner has started delivering weekly clinics in Westport based in the Poutini Waiora office. CPH staff have again supported the latest Poutini Waiora/West Coast PHO Spirometry clinic in Westport in September. Our AKP practitioner was on hand to offer cessation support for those involved in the clinic who would like to quit smoking. Following the success of these clinics in Buller, CPH are involved in the planning for similar clinics in Greymouth and Westland District in the coming months.

Kaumātua Wellbeing Hui

Regular Kaumātua Wellbeing hui have been scheduled and planned through to February 2016 with Poutini Waiora, WCPHO, WCDHB, Westland Medical Centre and kaumatua. These are based on the health needs and issues identified by the Kaumātua. Participants in Poutini Waiora's Hauora Pai programme have also been invited to these hui. October's hui included a kōrero with Work and Income staff as well as WCDHB staff regarding travel assistance. Upcoming hui include a focus on falls prevention, arthritis/gout, mental wellbeing and pre-diabetes/diabetes awareness.

Appetite for Life Franz Josef

CPH recently delivered an Appetite for Life course for the first time in Franz Josef. It was delivered as part of the 100 day challenge, which started in July as an initiative to get South Westland active. Participants commented that the information delivered on nutrition complimented their increase in activity well. Participants travelled from Hari Hari and Fox Glacier to attend the course.

Greymouth High School Canteen Revamp

CPH have been working with Greymouth High School to improve the food offered for sale at the canteen. Initially there was a high incidence of high fat, high sugar and high salt foods and this was worked through with the canteen manager who has led the changes. The school has eliminated or downsized most of these options while still having some treat food available. There are now more healthy choices available such as wraps, bread rolls, fresh fruit, yoghurt and muesli cups and homemade muffins. Feedback from staff and students has been positive.

Sugar Sweetened Beverages

As at 30 September all sugar-sweetened beverages (SSB) are no longer being sold on WCDHB premises. This change was advertised with high profile communication via the intranet, posters as well as information for staff at point of sale. The review of the rest of the WCDHB's Food and Beverage policy will continue over the coming months and align with work that is happening nationally in this space.

Legionella Health Promotion

CPH Health are currently working on a promotion to raise awareness of Legionnaire's disease, and West Coasters are being urged to follow some simple steps in order to avoid getting this serious illness linked to gardening. In spring every year the number of people with Legionnaires' disease begins to climb. This seasonal surge is mostly linked to gardeners catching Legionnaires' disease from potting mix or compost. It's important that gardeners make sure they avoid inhaling the dust from potting mix or compost as this can be dangerous. CPH is working with garden centres throughout the district to encourage the safe use of potting mix: this includes providing pamphlets with information on Legionnaire's disease and encouraging gardeners to wear face masks.

Mental Health Awareness Week

CPH is continuing to support Mental Health Awareness Week throughout the month of October. This has included a spread regarding Wellbeing in The Messenger, the distribution of 'Give' resources to public in Westport and community groups in Fox Glacier and Franz Joseph. CPH staff have also delivered taster sessions on Mindfulness and Tai Chi in Greymouth.

Mindfulness in Schools Programme

CPH in partnership with Buller REAP has started piloting the Mindful Aotearoa (Mental Health Foundation) Mindfulness in Schools Programme in two West Coast schools this term: Westport North and Reefton Area School. This eight week pilot follows school principals, teachers, Social Workers in Schools and Public Health Nurses on the West Coast identifying anxiety and emotional difficulties as a wellbeing priority for primary aged students.

CHAIR'S UPDATE

TO: **Members**
 Tatau Pounamu Advisory Group

SOURCE: **Chair**

DATE: **22 September 2015**

Report Status – For: Decision ☐ Noting ☒ Information ☐

1. ORIGIN OF THE REPORT

The verbal update.

2. RECOMMENDATION

That the Tatau Pounamu Advisory Group notes the report.

A verbal update will be given at the meeting.

TO: Chair and Members – Tatau Pounamu Manawhenua Advisory Group

SOURCE: General Manager, Maori Health

DATE: 22 October 2015

Report Status – For:	Decision <input type="checkbox"/>	Noting <input checked="" type="checkbox"/>	Information <input type="checkbox"/>
----------------------	-----------------------------------	--------------------------------------------	--------------------------------------

1. ORIGIN OF THE REPORT

This report is provided to Tatau Pounamu Manawhenua Advisory Group as a regular update

2. RECOMMENDATION

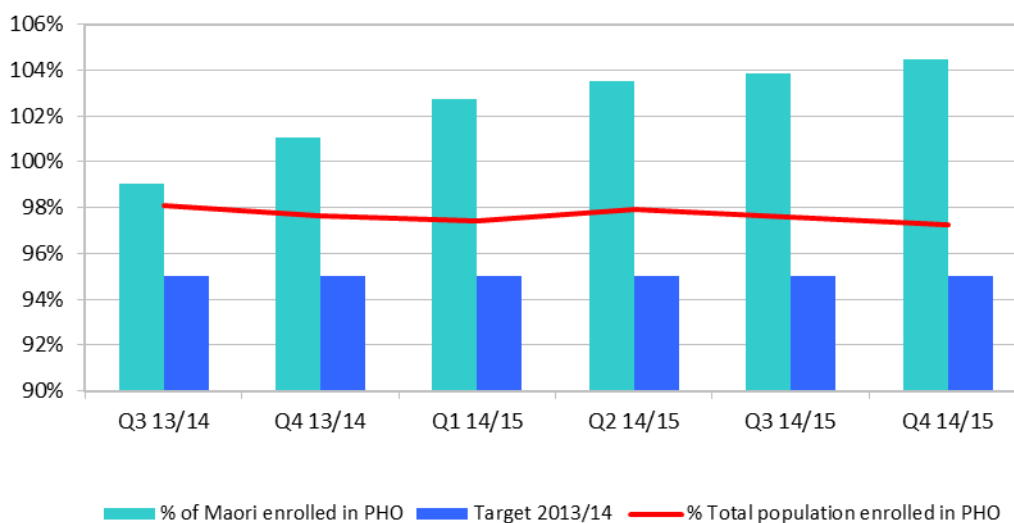
That the Tatau Pounamu Manawhenua Advisory Group notes this report
i notes the General Manager Maori Health Update

Maori Health Quarterly Report – Q4, 2014/15

Access to care

Percentage of Maori enrolled in the PHO

PHO enrolment using 2013 Census population data



* 2006 census population was used as the denominator.

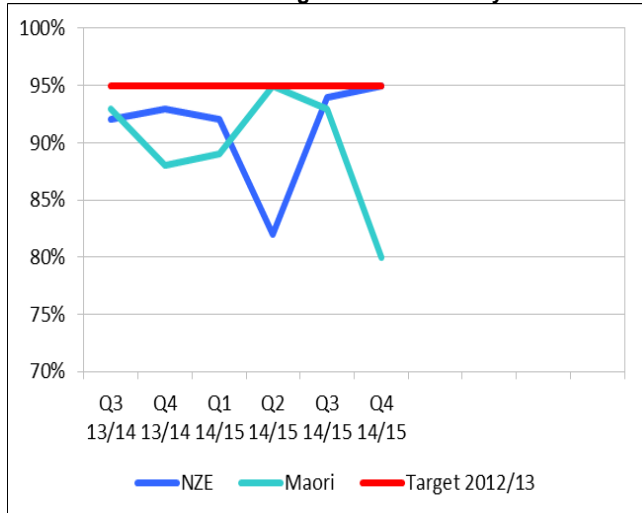
ACHIEVEMENTS/ISSUES OF NOTE

Enrolment in PHO: Using the 2013 population census figures 104% of Maori were enrolled with the PHO as at 30 June 2015. 3312 Maori were enrolled in quarter 4 compared to 3293 in quarter 3 an increase of 19 and an increase of 54 since Quarter 1.

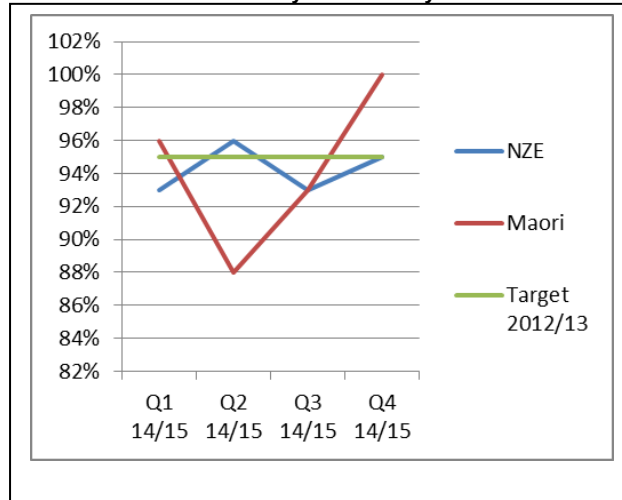
The Census data shows total Maori population is 3171.

Child, Youth and Maternity

NEW Immunisation HT: Eight-month-olds fully immunised



Immunisation: Two-year-olds fully immunised



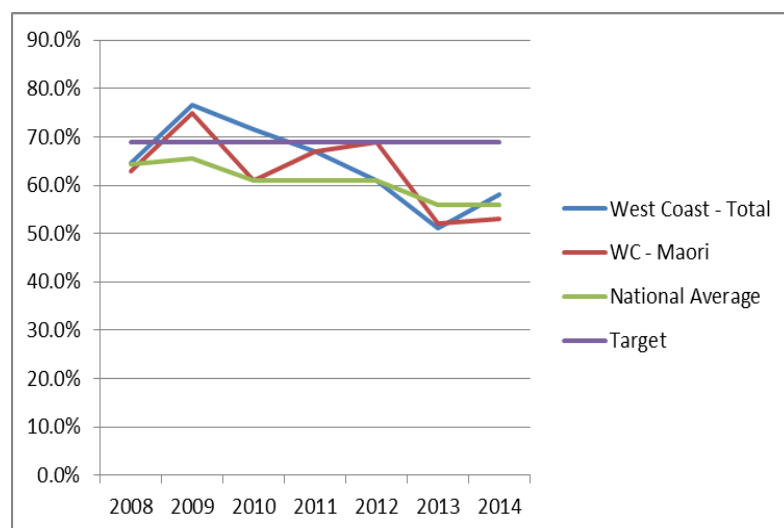
Eight-month-old immunisation: 80% of Maori babies have been immunised on time at 8 months of age in quarter 4 – 16 babies out of 20 eligible for this quarter which is a drop of 23% from Q3. This is compared to 95% of non-Maori babies where 52 from 55 eligible babies have been immunised.

Two-year-old immunisation: 100% of Maori 2 year olds have been immunised on time in Quarter 4 – 25 from 25 eligible babies. This is compared to 95% NZ European babies - 42 from 44 eligible babies.

Excellent results for Maori with 100% of 2 year olds immunised on time in Quarter 4.

Breastfeeding Support: The community lactation consultancy and breastfeeding advocates continue to be in contact with all new-born's Mums. There have been 52 new and return advocacy clients, including 6 Maori and 10 other.

Percentage of West Coast babies fully/exclusively breastfed at 6 weeks



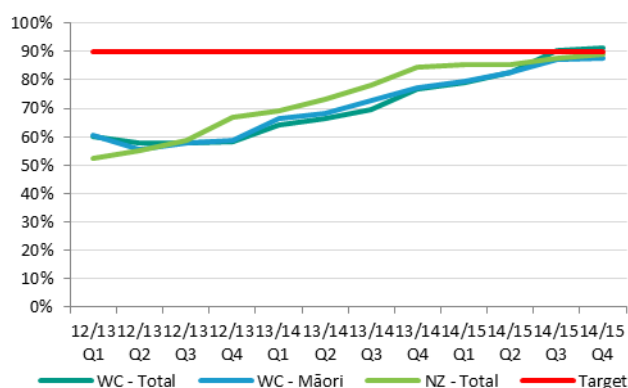
The breastfeeding target of 69% of babies exclusively/fully breastfed at 6 weeks continues to be a challenge for Maori. We will work closely through the Breastfeeding Interest Group and prioritising Maori Breastfeeding as a key target within the WC Priority Plan for Breastfeeding. We should begin to see some really positive results through the Mana Tamariki project and through the new Mama and Pepi worker at Poutini Waioara. Additionally all Mums receive contact by a Breastfeeding advocate

Mum 4 Mums

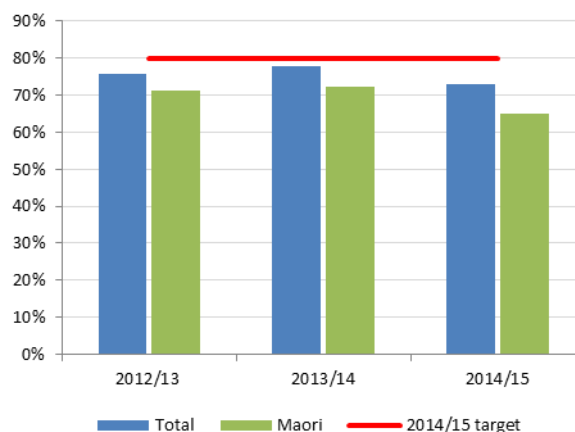
There have been 15 Mum for Mums trained as at 30 June 2015. Only 1 has been Maori and 1 Pacific however the Mana Tamariki Project Co-ordinator has been working with the PHO to look at developing a specific M4M training with Mums from that group of which they have 59 Mums engaged in the initiative.

More Heart & Diabetes checks

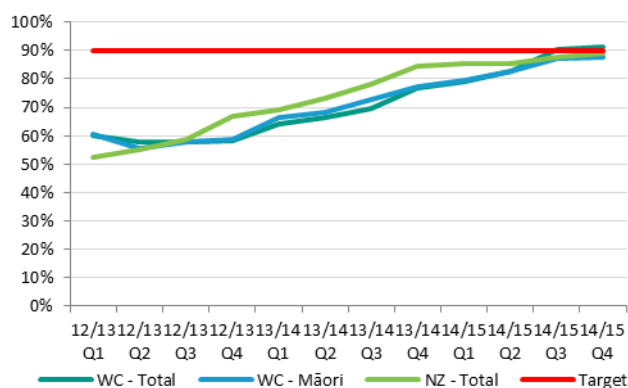
Diabetes Annual Review: % of people estimated to have diabetes who have had an annual check during the year



Diabetes Good Management: % of people who have HBA1c levels at or below 8.0 when assessed at their annual check



More Heart and Diabetes Checks Health Target: % of eligible PHO population having had a CVD risk assessment in the last 5 years



Diabetes

Maori still continue to show a good rate of access to Diabetes Annual Reviews. 98 Maori have participated in a Diabetes Annual Review. 65% of Maori with diabetes have had Retinal Exams, 64% show HBA1c levels at or below 8.0, 61% are non-smokers and 70% are on statins.

CVD Health Target

Performance against the More Heart and Diabetes Checks Health Target has increased this quarter, once again meeting the target with a result of 91.1%.

Maori make up 8% of CVRAs this quarter. By comparison, Maori make up 9.8% (1026) of the eligible cohort for CVRA on the West Coast. (The eligible age range for Maori is male 35-74 years and for female 45-74 years). 88% of those eligible have been screened: this includes 84% of eligible males and 92% of eligible females.

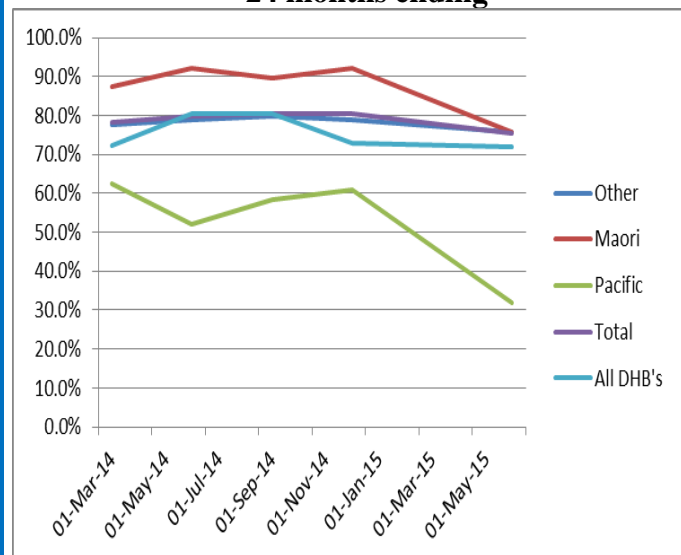
The smoking profile for CVRAs completed this quarter for Maori is 55% not smoking compared with other ethnicities screened not smoking 70%.

Green Prescription: Quarter 4 data shows from 123 referrals to the Green Prescription programme in the Grey/Westland district 17 were for Maori, 26 total referrals were made in the Buller district with 6 being for Maori. The major group of conditions this quarter is people with elevated body mass index (BMI), followed by depression/anxiety and cardiovascular disease. This quarter sees a pleasing increase for Maori in the Buller and Grey/Westland districts.

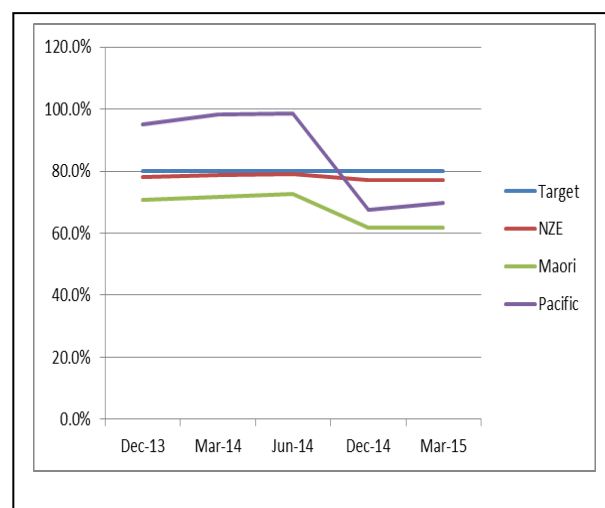
Long Term Condition Management (LTC): 233 Maori are enrolled in the Long Term Conditions programme as at June 30 2015 and increase from 205 in quarter 3, Maori enrolments makes up 6% of all enrolment in the LTC programme. The target is 7.6%. For comparison Maori make up 6.3% of the enrolled population at the primary practices aged 45 years and above.

Cancer

Percentage of eligible Maori women (45-69) receiving breast screening examination in the last 24 months ending



Percentage of eligible Maori women (25-69) receiving cervical screening in the last 3 years



ACHIEVEMENTS/ISSUES OF NOTE

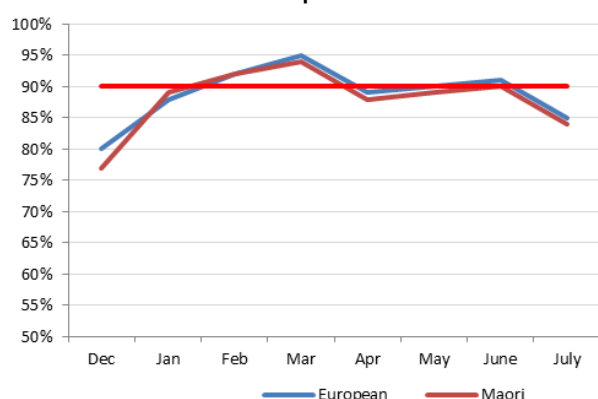
Breast Cancer Screening: Approximate 75.47% of all eligible women aged 45-69 age-groups on the West Coast have undergone breast screening for the period ending June 2015. The coverage for eligible Maori women has dropped considerably in this quarter to 75.7 however still continues to be higher compared to all other DHBs. The drop has occurred nationally and is as a result of the new census data.

Cervical cancer screening: At the end of March 2015, the preliminary three year coverage result for cervical screening on the West Coast non-Maori was 61.9%. The result for Pacific women was 69.6 and for New Zealand European is 77.7%. The Ministry of Health are currently facilitating a process for the redesign of screening services including Breast screening. The National Screening unit plans to run a contestable tender process from 1 November 2015. Locally we are going to begin discussions regarding how this may look and work for us here on the Coast.

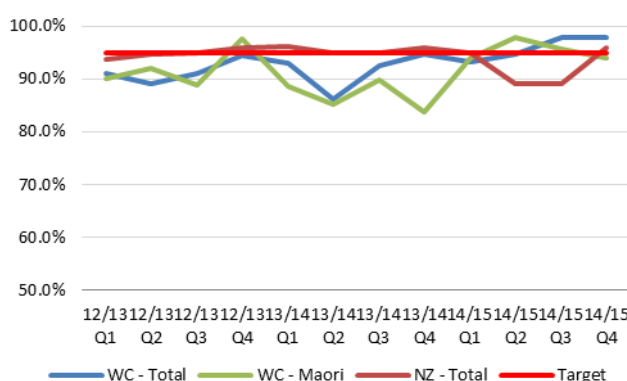
|

SMOKING CESSATION

Primary Smokefree Health Target: Smokers attending primary care given advice & help to quit



Secondary Smokefree Health Target: Hospitalised smokers given quit advice & help



ACHIEVEMENTS/ISSUES OF NOTE

Primary Smokefree Health Target: Smokers attending primary care given advice and help to quit

Performance improved 15.7% during Quarter 3, meeting and exceeding target with a result of 94%. We are very pleased to have met target for the first time, attributing our success to the install of patient dashboard as well as long standing best practice initiatives. For Maori the result has been that 711 from 730 (97.4) % of registered Maori smokers have been provided with Brief Advice and Cessation support.

Smoking quit rates:

Service	Usage (6 month Jan-Jun 2015)	Outcomes (3 month Quit Rate)
Aukati KaiPaipa	126	38.3%
DHB Cessation Service	113	≈ 31.3%
Coast Quit	312	31.8%

Aukati Kai Paipa: For the half year from January to June 2015 the AKP service has worked with 126 clients with a 38.3% validated abstinence rate at 3 months. The Aukati Kai Paipa cessation adviser is working more closely with practices and Poutini Waiora which is resulting in increased referrals to the service.

PHO Coast Quit Programme: For the quarter March – June 2015 .18.4% (23) Maori accessed the Coastquit cessation service an increase of 8% from last quarter.

Secondary care better help for smokers to quit health target: During Quarter 4, West Coast DHB staff provided 97.8% of hospitalised smokers with smoking cessation advice and support –meeting the Secondary Care Better Help for Smokers to Quit Health Target. Best practice initiatives continue, however the effects of small numbers remain challenging. Result reflects 99.7% of discharges coded

The Healthy West Coast Alliance workstream have set a high target for improving the access by Maori to cessation services (25% across all services) and have developed an action plan to more effectively target Maori Smokers to promote a quit attempt and increase access rates to cessation services including (but not limited to) Aukati KaiPaipa.

To this end, a sub-group made up of all cessation service providers and health promoters from C&PH and the PHO have developed some key actions. These include: 100% of Poutini Waiora staff receiving updated ABC training; targeted Health Promotion material to be developed detailing all cessation service providers available; Maori specific group sessions to run during Stoptober; AKP worker linking with PHO to access practice enrolment data, specifically Maori Smokers not identified as having received Brief Advice.

The latest data from Jan to June 2015 shows that across all services 20.4% of clients referred to cessation are for Maori which is a pleasing result.

Service	% Maori access
DHB Cessation services	14.1%
Coast Quit	13.8%
Aukati Kaipapa	46.8%
All Services	20.4%

A pilot has also been conducted in the Buller region with Poutii Waiora conducting Spirometry testing on all Maori patients with a known diagnosis of COPD. Whanau were tested and screened for smoking status with smokers being given targeted advice regarding the benefits of quitting.

NRT is available at a reduced cost or free through all three West Coast specific cessation services – DHB cessation services, Aukati Kaipapa & Coast Quit. Subsidised inhalers are available from Greymouth hospital to staff and patients. Varenicline, Bupropion, and Nortriptylline are available at reduced cost or free through the Coast Quit programme, as clinically indicated.

Motivational Interviewing in relation to smoking behaviour is due to be piloted by the Maori Mental Health Team as part of a campaign to promote the 5 ways to wellness with their clients.

CPH worked with schools to assist in the delivery of the Kapa Haka and Waka Ama competitions. These Smokefree events were well attended by a number of schools across the West Coast

Kia ora Hauora Work Placement Programme

The second Rangatahi placement programme hosted by West Coast DHB has been successful. We had 7 female Rangatahi from John Paull II and Buller, Westland and Greymouth High who experienced a wide range of areas within our health sector including - Public Health Organisation, Poutini Waioara, Community Public Health, GP Practice and Secondary services to name a few that provided further influence for their potential career pathways into health.

Two of the students from this years placement have enrolled in 1st year Bachelor of Nursing at CPIT

There will be an emphasis for next years programme to target at Maori males to participate in this placement opportunity.

Some of the evaluations received were as follows:

- *“This was a wonderful opportunity for rangatahi, it has made me really want to get started on my tertiary education. I am so grateful”*
- *All our speakers were passionate about what they do, which was so inspiring. I want to love what I do as much as them!”*
- *Amazing opportunity, very thankful for the relationships I have built in the West Coast Health Sector.*

Scholarships/Studentship

The 2015 scholarships and studentships have just been decided with 1 Maori from 5 places being awarded a \$5000 studentship and 5 Maori and 1 Tongan from 20 places being awarded a \$500 scholarship.

Maori Health Plan 2015/2016

Work is occurring with Planning and Funding in Canterbury to streamline and more effectively provide accurate data to report against the Maori Health Plan.

Te Rau Matatini – Cultural Competency training

This training will was held Wednesday 9 September and Tuesday 13 October at Tuhuru Marae, Arahura. The Kaitiaki Ahurea Level 2 programme is a New Zealand Qualifications Authority (NZQA) training scheme that was developed and delivered by Te Hau Maia to non-Maori working in Public Health. We have over 20 people participating in the training.

The purpose for developing this training course is to increase Maori public health gains, by:

- Providing a foundation level of learning and understanding in cultural competencies for beginner and experienced Public Health practitioners e.g. health promoters, health protection officers, medical officers of health and others.
- Influencing the transformation of Public Health unit practices towards a more Maori responsive Public Health services throughout Te Waipounamu.
- Participation in developing, mobilising and maintaining a Maori Public Health network throughout Te Waipounamu and Aotearoa.

Improving the Maori Cancer Pathway

In Budget 2012, the Government announced \$33 million for improved cancer services as part of the Faster Cancer Treatment programme. The Faster Cancer Treatment programme aims to improve services so that over time all cancer patients will have access to the same quality care within the same timeframes, no matter where they live.

In February 2014, the Ministry asked District Health Boards (DHBs) to submit proposals to the Cancer Service Improvement Fund for making sustainable, measurable improvements along the patient pathway. The sustainable improvement must support the coordination of patient pathways, and support DHBs to work towards achievement of the Faster Cancer Treatment health target and/or support the implementation of the tumour standards of service provision. DHBs were asked to consider how their service improvement would support equity of access to cancer treatment – this might be by tumour type, ethnicity, geography, or any other way appropriate for the DHB's population. Nelson Marlborough DHB was successful with the proposal for Improving the Cancer Pathway for Māori. The findings of this review are attached as information and the key outcomes are as follows:

Outcomes

- The Project reviewed the cancer care continuum for Māori patients in the Nelson Marlborough district and provided a cancer needs assessment. This will now enable the Provider to:
- Understand the impact of cancer for Māori in Te Tau Ihu;
- More clearly map the current patient pathways for Māori cancer patients;
- Understand what's working well, what are the issues/what's not working well, and introduce solutions that support and enhance the journey for Māori cancer patients that will contribute to improved outcomes; and
- Consider recommendations for improvements and implement at least one of these improvements

Nelson Marlborough DHB welcomes the opportunity to continue improving the Cancer Pathway for Maori across the South Island through a second phase project. Part 1 of this project proposal describes this initiative. Evidence suggests that Maori will face challenges in other parts of the South Island similar to what has been found in Nelson Marlborough. Part 2 of this proposal describes an initiative to confirm and address these challenges across the other South Island DHBs.

The primary contribution of this initiative will be to focus on improving equity along the cancer pathway, for all patients across the South Island, and has been identified as a regional priority for all DHBs and providers of cancer services. It will also support the 62-day FCT target by promoting & facilitating early and consistent engagement of Māori with cancer services.

We are currently working with NMDHB and Dr Melissa Cragg who will be delivering the findings of the first stage of the project to several audiences on the West Coast – this will take place on the 18/19 November.

Maori Consumer Forum

Poutini Waiora Health & Social Services and Rauawa O Te Waka Hauora Hinengaro - Maori Mental Health Services, WCDHB hosted a consumer forum on the 17 September at Arahura Marae. There was a great community turnout for this and a lot of really good feedback and conversation regarding improving access for consumers for both these services.

Buller Cultural Competency Training

On the 15th of October the GM Maori took a training session on the Heath Equity Assessment Tool, HEAT and Whanau Ora for staff of Buller medical. There were also staff members from Poutini Waiora present, in all over twenty people attended including members of Te Ha o Kawatiri a community group formed in Buller to advance some very exciting whanau ora initiatives there.

Alliance Leadership Team – Planning Priorities 2016/2017

A planning meeting to focus on confirming high level priorities for the 2016/2017 Annual Plan and to inform and guide workstreams with their planning will take place on the 12 November 2015 at 5.30 in the West Coast DHB Boardroom.

We are awaiting the 2016/2017 planning package to come out and are expecting this at the end of October.

TO: Chair and Members
Community and Public Health & Disability Support Advisory Committee

SOURCE: Planning & Funding
Alliance Leadership Team

DATE: 22 October 2015

Report Status – For:	Decision	<input type="checkbox"/>	Noting	<input checked="" type="checkbox"/>	Information	<input type="checkbox"/>
----------------------	----------	--------------------------	--------	-------------------------------------	-------------	--------------------------

1. ORIGIN OF THE REPORT

This report is a standing agenda item, highlighting the progress made by the West Coast Alliance.

2. RECOMMENDATION

That the Committee;
i. Notes the Alliance Update.

3. SUMMARY

Progress of Note:

Alliance Leadership Team

The ALT meets on a regular basis to review the progress of the workstreams to discuss key system wide issues. In the last meeting the following was discussed:

- The risk around GP shortage and the impact this has on wait times, as well as the need for a medical workforce plan to complement the recruitment process;
- An acknowledgment of the impact on the Health of Older Persons workstream because of the repairs of the Allen Bryant Lifecare facility;
- The good progress being made around Maori health and the progress of the Mana Tamariki Mana Mokopuna group; and
- Noted the work in supporting further increased use of telehealth, supporting the new model of care. This will be supported by increased visibility of patient travel times.

As part of broadening the expertise of the ALT membership it also agreed to the appointment of Dr Michelle Dhanak to the Alliance Leadership Team, representing expertise in the field of Older Persons Health.

Mental Health Workstream

- Project management support is now in place and this will result in a review of priorities, timeframes, roles and responsibilities.

Health of Older Persons

- The CCCN continues to provide specialist advice and support across a range of settings. Vacancies remain for the right applicant with the appropriate skills to establish FIRST and

the Falls Prevention service. Existing clinical resources might be reprioritised to develop FIRST and Falls Prevention.

- To identify how Coast wound care expertise is shared and areas for improvement, a wound care process mapping session with ARC, HBS and District Nursing was held on 30 July 2015. A second meeting will be held in September/October 2015.
- The West Coast health system continues to ensure that most Older People are having the appropriate interRAI assessments in a timely fashion. For Q4 2014/15, 94.2% of the target population received an interRAI assessment—just below the 95% Ministry target.
- A working group will be formed in Quarter 2 2015/16 to bring key clinicians from the CCCN, Psychiatric Older Persons Health Services and Palliative Care together to plan for further improvements.
- The new Walking in Another's Shoes (WIAS) educator is in post and the working group mentioned above will identify improved links and ways of working to ensure consistent and effective approaches to palliative care for people with dementia and others.

Grey/Westland & Buller Family Health Services (IFHS)

- Significant focus on health inequalities is occurring in the Grey/Westland IFHS workstream over the next few months including working with Poutini Waiora around engaging our hard to reach communities, particularly Maori, and understanding their barriers in accessing care.
- A workshop for the future design of planned and unplanned care took place in September looking at how primary and Grey ED would be working together in the future.
- Resource has been provided to assist with project planning in the Buller IFHS workstream, so that activities are phased across the project timeframe with a focus on timely achievement of objectives.

Healthy West Coast

- The Request for Proposal (RFP) process for delivery of Pregnancy and Parenting Education on the West Coast continues. A preferred provider has been identified and recommended to Planning & Funding.
- Work continues on the development of a West Coast DHB Nutrition Policy which includes reducing and limiting the availability of sugar sweetened beverages (SSBs). SSBs are no longer sold on DHB premises.
- The Transalpine Oral Health Promotion Plan has been reviewed by HWC and the workstream look forward to being involved in the implementation planning phase.
- A pilot has begun with the Maori Mental Health team to engage more smokers in conversations about their smoking to promote more quit attempts. It is expected that this will be rolled out to other community teams and Mental Health NGOs following successful trial.

Child and Youth

- The Maternal Care and Unborn Wellbeing (MCAUW) meeting was successfully relaunched recently. The multi-agency group meet to support the needs of referred vulnerable pregnant women and their unborn children.

Pharmacy

- The business case for a hospital pharmacy aseptic unit has been completed and submitted.
- An agreement between Buller Pharmacy and Buller Health Services has been developed. Operational aspects are being progressed to facilitate the arrangement, such as access to Medtech.

Report prepared by:

Jenni Stephenson, Planning & Funding

Report approved for release by:

Stella Ward, Chair, Alliance Leadership Team

WEST COAST DHB – MEETING SCHEDULE

JANUARY – DECEMBER 2015

DATE	MEETING	TIME	VENUE
Thursday 29 January 2015	CPHAC & DSAC	9.00am	Boardroom, Corporate Office
Thursday 29 January 2015	HAC	11.00am	Boardroom, Corporate Office
Thursday 29 January 2015	QFARC	1.30pm	Boardroom, Corporate Office
Friday 13 February 2015	BOARD	10.15am	St John, Waterwalk Rd, Greymouth
Thursday 12 March 2015	CPHAC & DSAC	9.00am	Boardroom, Corporate Office
Thursday 12 March 2015	HAC	11.00am	Boardroom, Corporate Office
Thursday 12 March 2015	QFARC	1.30pm	Boardroom, Corporate Office
Friday 27 March 2015	BOARD	10.15am	St John, Waterwalk Rd, Greymouth
Thursday 23 April 2015	CPHAC & DSAC	9.00am	Boardroom, Corporate Office
Thursday 23 April 2015	HAC	11.00am	Boardroom, Corporate Office
Thursday 23 April 2015	QFARC	1.30pm	Boardroom, Corporate Office
Friday 8 May 2015	BOARD	10.15am	St John, Waterwalk Rd, Greymouth
Thursday 4 June 2015	CPHAC & DSAC	9.00am	Boardroom, Corporate Office
Thursday 4 June 2015	HAC	11.00am	Boardroom, Corporate Office
Thursday 4 June 2015	QFARC	1.30pm	Boardroom, Corporate Office
Friday 26 June 2015	BOARD	10.15am	St John, Waterwalk Rd, Greymouth
Thursday 23 July 2015	CPHAC & DSAC	9.00am	Boardroom, Corporate Office
Thursday 23 July 2015	HAC	11.00am	Boardroom, Corporate Office
Thursday 23 July 2015	QFARC	1.30pm	Boardroom, Corporate Office
Friday 7 August 2015	BOARD	10.15am	St Johns Waterwalk Rd, Greymouth
Thursday 10 September 2015	CPHAC & DSAC	9.00am	Boardroom, Corporate Office
Thursday 10 September 2015	HAC	11.00am	Boardroom, Corporate Office
Thursday 10 September 2015	QFARC	1.30pm	Boardroom, Corporate Office
Friday 25 September 2015	BOARD	10.15am	St John, Waterwalk Rd, Greymouth
Thursday 22 October 2015	CPHAC & DSAC	9.00am	Boardroom, Corporate Office
Thursday 22 October 2015	HAC	11.00am	Boardroom, Corporate Office
Thursday 22 October 2015	QFARC	1.30pm	Boardroom, Corporate Office
Friday 6 November 2015	BOARD	10.15am	St John, Waterwalk Rd, Greymouth
Thursday 3 December 2015	CPHAC & DSAC	9.00am	Boardroom, Corporate Office
Thursday 3 December 2015	HAC	11.00am	Boardroom, Corporate Office
Thursday 3 December 2015	QFARC	1.30pm	Boardroom, Corporate Office
Friday 11 December 2015	BOARD	10.15am	St John, Waterwalk Rd, Greymouth

The above dates and venues are subject to change. Any changes will be publicly notified.

TATAU POUNAMU MANAWHENUA ADVISORY GROUP 2015 MEETING SCHEDULE

DATE	TIME	VENUE
Thursday 29 January 2015	3.00 – 5.00pm	Kahurangi Room, Mental Health
Thursday 12 March 2015	3.00 – 5.00pm	Kahurangi Room, Mental Health
Thursday 16 April 2015	3.00 – 5.00pm	Board Room, Corporate Services
Thursday 25 June 2015	3.00 – 5.00pm	Board Room, Corporate Services
Thursday 20 August 2015	3.00 – 5.00pm	St Johns Meeting Room
Thursday 22 October 2015	3.00 – 5.00pm	Public Health Organisation (PHO)
Thursday 3 December 2015	3.00 – 5.00pm	St Johns Meeting Room

**MEETING DATES & TIMES
ARE SUBJECT TO CHANGE**

WEST COAST DHB – MEETING SCHEDULE

JANUARY – DECEMBER 2016

DATE	MEETING	TIME	VENUE
Thursday 28 January 2016	CPHAC & DSAC	9.00am	Boardroom, Corporate Office
Thursday 28 January 2016	HAC	11.00am	Boardroom, Corporate Office
Thursday 28 January 2016	QFARC	1.30pm	Boardroom, Corporate Office
Friday 12 February 2016	BOARD	10.15am	St John, Waterwalk Rd, Greymouth
Thursday 10 March 2016	CPHAC & DSAC	9.00am	Boardroom, Corporate Office
Thursday 10 March 2016	HAC	11.00am	Boardroom, Corporate Office
Thursday 10 March 2016	QFARC	1.30pm	Boardroom, Corporate Office
Friday 1 April 2016	BOARD	10.15am	St John, Waterwalk Rd, Greymouth
Thursday 28 April 2016	CPHAC & DSAC	9.00am	Boardroom, Corporate Office
Thursday 28 April 2016	HAC	11.00am	Boardroom, Corporate Office
Thursday 28 April 2016	QFARC	1.30pm	Boardroom, Corporate Office
Friday 13 May 2016	BOARD	10.15am	St John, Waterwalk Rd, Greymouth
Thursday 9 June 2016	CPHAC & DSAC	9.00am	Boardroom, Corporate Office
Thursday 9 June 2016	HAC	11.00am	Boardroom, Corporate Office
Thursday 9 June 2016	QFARC	1.30pm	Boardroom, Corporate Office
Friday 24 June 2016	BOARD	10.15am	St John, Waterwalk Rd, Greymouth
Thursday 28 July 2016	CPHAC & DSAC	9.00am	Boardroom, Corporate Office
Thursday 28 July 2016	HAC	11.00am	Boardroom, Corporate Office
Thursday 28 July 2016	QFARC	1.30pm	Boardroom, Corporate Office
Friday 12 August 2016	BOARD	10.15am	St Johns Waterwalk Rd, Greymouth
Thursday 8 September 2016	CPHAC & DSAC	9.00am	Boardroom, Corporate Office
Thursday 8 September 2016	HAC	11.00am	Boardroom, Corporate Office
Thursday 8 September 2016	QFARC	1.30pm	Boardroom, Corporate Office
Friday 23 September 2016	BOARD	10.15am	St John, Waterwalk Rd, Greymouth
Thursday 27 October 2016	CPHAC & DSAC	9.00am	Boardroom, Corporate Office
Thursday 27 October 2016	HAC	11.00am	Boardroom, Corporate Office
Thursday 27 October 2016	QFARC	1.30pm	Boardroom, Corporate Office
Friday 4 November 2016	BOARD	10.15am	St John, Waterwalk Rd, Greymouth
Thursday 1 December 2016	CPHAC & DSAC	9.00am	Boardroom, Corporate Office
Thursday 1 December 2016	HAC	11.00am	Boardroom, Corporate Office
Thursday 1 December 2016	QFARC	1.30pm	Boardroom, Corporate Office
Friday 9 December 2016	BOARD	10.15am	St John, Waterwalk Rd, Greymouth

The above dates and venues are subject to change. Any changes will be publicly notified.